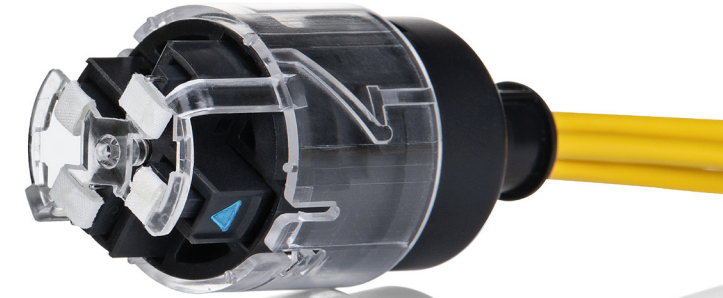


# SWK™ PARTS GUIDE

Today's connected network infrastructure faces unprecedented demands from cloud and hyperscale growth and their extraordinary connectivity requirements. Our revolutionary SWK™ cabling infrastructure products are designed specifically to provide high density and low loss connectivity, ease of installation and manageability, low-cost deployment and operations, and flexibility for growth and scale.



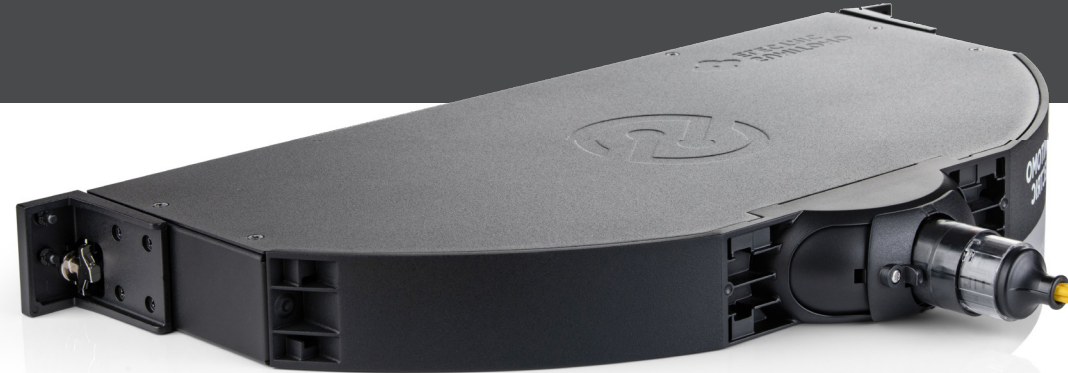
DESCRIPTION	CABLE MEDIA TYPE	CABLE GRADE	PART NUMBER
<b>SWK CABLES - JUMPERS</b>			
SWK-L 24f SMF Connector, Pre-terminated Patch Cable, 1 meter	SMF	OFNP	SW-24ST-SM-INP-SWLFSWLF-001M
SWK-L 48f SMF Connector Pre-terminated Patch Cable, 1 meter	SMF	OFNP	SW-48ST-SM-INP-SWLFSWLF-001M
SWK-L 96f SMF Connector Pre-terminated Patch Cable, 1 meter	SMF	OFNP	SW-96ST-SM-INP-SWLFSWLF-001M
SWK-L 144f SMF Connector Pre-terminated Patch Cable, 1 meter	SMF	OFNP	SW-144ST-SM-INP-SWLFSWLF-001M
SWK-L 192f SMF Connector Pre-terminated Patch Cable, 1 meter	SMF	OFNP	SW-192ST-SM-INP-SWLFSWLF-001M
<b>SWK CABLES - FANOUT</b>			
SWK-L 48f SMF Fanout Cable, SWK 48f - 24 x LC, 3 meter	SMF	OFNP	SW-48FO-SM-INP-SWLFULCU-003M
SWK-L 48f SMF Fanout Cable , SWK 48f - 6 x MPO8 Female , 3 meter	SMF	OFNP	SW-48FO-SM-INP-SWLFMPF8-003M
SWK-L 48f SMF Fanout Cable , SWK 48f - 4 x MPO12 Female, 3 meter	SMF	OFNP	SW-48FO-SM-INP-SWLFMPF12-003M
SWK-L 96f SMF Fanout Cable, SWK 96f - 48 x LC, 3 meter	SMF	OFNP	SW-96FO-SM-INP-SWLFULCU-003M
SWK-L 96f SMF Fanout Cable , SWK 96f - 12 x MPO8 Female, 3 meter	SMF	OFNP	SW-96FO-SM-INP-SWLFMPF8-003M
SWK-L 96f SMF Fanout Cable , SWK 96f - 8 x MPO12 Female, 3 meter	SMF	OFNP	SW-96FO-SM-INP-SWLFMPF12-003M
SWK-L 144f SMF Fanout Cable, SWK 144f - 72 x LC, 3 meter	SMF	OFNP	SW-144FO-SM-INP-SWLFULCU-003M
SWK-L 144f SMF Fanout Cable , SWK 144f - 18 x MPO8 Female, 3 meter	SMF	OFNP	SW-144FO-SM-INP-SWLFMPF8-003M
SWK-L 144f SMF Fanout Cable , SWK 144f - 12 x MPO12 Female, 3 meter	SMF	OFNP	SW-144FO-SM-INP-SWLFMPF12-003M
<b>SWK CABLES - PIGTAILS</b>			
SWK-L 24f SMF Connector, Pre-stubbed Pigtail, 2 x 12f Ribbon Fibers, 3 meter	SMF	OFNP	SW-24PT-SM-INP-SWLF0-003M
SWK-L 48f SMF Connector Pre-stubbed Pigtail, 4 x 12f Ribbon Fibers, 3 meter	SMF	OFNP	SW-48PT-SM-INP-SWLF0-003M
SWK-L 96f SMF Connector Pre-stubbed Pigtail, 8 x 12f Ribbon Fibers, 3 meter	SMF	OFNP	SW-96PT-SM-INP-SWLF0-003M
SWK-L 144f SMF Connector Pre-stubbed Pigtail, 12 x 12f Ribbon Fibers, 3 meter	SMF	OFNP	SW-144PT-SM-INP-SWLF0-003M
SWK-L 192f SMF Connector Pre-stubbed Pigtail, 16 x 12f Ribbon Fibers, 3 meter	SMF	OFNP	SW-192PT-SM-INP-SWLF0-003M



Pricing available upon request. For more information, visit [SumitomoElectricLightwave.com](http://SumitomoElectricLightwave.com).

# SWK™ PARTS GUIDE

Complete terms & conditions of this sale are available upon request or can be found at [www.swickdesigns.com/terms-conditions.html](http://www.swickdesigns.com/terms-conditions.html) and are incorporated by reference.



DESCRIPTION	CABLE MEDIA TYPE	CABLE GRADE	PART NUMBER
<b>SWK PATCH PANELS - PLUG-IN-PLAY</b>			
SWK Patch Panel, 1RU, 96f, Rapid Latch, Flex Adapter, 48 x LC (front) - SWK 96f (rear)	SMF	N/A	SW-PP1-96SM-48LCUD-SWLM
SWK Patch Panel, 1RU, 96f, Rapid Latch, Flex Adapter, 12 x MPO8 Male (front) - SWK 96f (rear)	SMF	N/A	SW-PP1-96SM-12MPM8-SWLM
SWK Patch Panel, 1RU, 144f, Rapid Latch, Flex Adapter, 18 x MPO8 Male (front) - SWK 144f (rear)	SMF	N/A	SW-PP1-144SM-18MPM8-SWLM
SWK Patch Panel, 1RU, 288f, Rapid Latch, Flex Adapter, 36 x MPO8 Male (front) - 2 x SWK 144f (rear)	SMF	N/A	SW-PP1-288SM-36MPM8-2SWLM
SWK Patch Panel, 1RU, 96f, Rapid Latch, Flex Adapter, 8 x MPO12 Male (front) - SWK 96f (rear)	SMF	N/A	SW-PP1-96SM-8MPM12-SWLM
SWK Patch Panel, 1RU, 144f, Rapid Latch, Flex Adapter, 12 x MPO12 Male (front) - SWK 144f (rear)	SMF	N/A	SW-PP1-144SM-12MPM12-SWLM
SWK Patch Panel, 1RU, 288f, Rapid Latch, Flex Adapter, 24 x MPO12 Male (front) - 2 x SWK 144f (rear)	SMF	N/A	SW-PP1-288SM-24MPM12-2SWLM
SWK Patch Panel, FAO, 1RU, 96f, Rapid Latch, Flex Adapter, 48 x LC (front) - SWK 96f (front)	SMF	N/A	SW-PP1F-96SM-48LCUD-SWLM
SWK Patch Panel, FAO, 1RU, 96f, Rapid Latch, Flex Adapter, 12 x MPO8 Male (front) - SWK 96f (front)	SMF	N/A	SW-PP1F-96SM-12MPM8-SWLM
SWK Patch Panel, FAO, 1RU, 96f, Rapid Latch, Flex Adapter, 18 x MPO8 Male (front) - SWK 144f (front)	SMF	N/A	SW-PP1F-144SM-18MPM8-SWLM
SWK Hyper Patch Panel, 2RU, 288f, Rapid Latch, 144 x LC (front) - 3 x SWK 96f (rear)	SMF	N/A	SW-PP2-288SM-144LCUD-3SWLM
SWK Hyper Patch Panel, 2RU, 288f, Rapid Latch, 36 x MPO8 Male (front) - 3 x SWK 96f (rear)	SMF	N/A	SW-PP2-288SM-36MPM8-3SWLM
SWK Hyper Patch Panel, 2RU, 288f, Rapid Latch, 24 x MPO12 Male (front) - 3 x SWK 96f (rear)	SMF	N/A	SW-PP2-288SM-24MPM12-3SWLM
SWK Hyper Patch Panel, 2RU, 288f, Rapid Latch, 144 x LC (front) - 2 x SWK 144f (rear)	SMF	N/A	SW-PP2-288SM-144LCUD-2SWLM
SWK Hyper Patch Panel, 2RU, 288f, Rapid Latch, 36 x MPO8 Male (front) - 2 x SWK 144f (rear)	SMF	N/A	SW-PP2-288SM-36MPM8-2SWLM
SWK Hyper Patch Panel, 2RU, 288f, Rapid Latch, 24 x MPO12 Male (front) - 2 x SWK 144f (rear)	SMF	N/A	SW-PP2-288SM-24MPM12-2SWLM
<b>SWK PATCH PANELS - PIGTAIL</b>			
SWK Patch Panel, 1RU, 96f, Rapid Latch, Flex Adapter, 48 x LC (front) - 8 x 12f Ribbon (rear), 1 meter	SMF	N/A	SW-PP1-96SM-48XLCUD-001M
SWK Patch Panel, 1RU, 96f, Rapid Latch, Flex Adapter, 12 x MPO8 (front) - 8 x 12f Ribbon (rear), 1 meter	SMF	N/A	SW-PP1-96SM-12MPM8-001M
SWK Patch Panel, 1RU, 96f, Rapid Latch, Flex Adapter, 8 x MPO12 (rear) - 8 x 12f Ribbon (rear), 1 meter	SMF	N/A	SW-PP1-96SM-8MPM12-001M
SWK Hyper Patch Panel, 2RU, 288f, Rapid Latch, 144 x LC (front) - 12 x 12f Ribbon (rear), 1 meter	SMF	N/A	SW-PP2-288SM-144LCUD-001M
SWK Hyper Patch Panel, 2RU, 288f, Rapid Latch, 36 x MPO8 (front) - 12 x 12f Ribbon (rear), 1 meter	SMF	N/A	SW-PP2-288SM-36MPM8-001M
SWK Hyper Patch Panel, 2RU, 288f, Rapid Latch, 24 x MPO12 (front) - 12 x 12f Ribbon (rear), 1 meter	SMF	N/A	SW-PP2-288SM-24MPM12-001M
<b>SWK FIBER ADAPTER PANELS (FAP)</b>			
SWK Universal Fiber Adapter Module (FAP), 1RU, Rapid Latch, 12 x Universal Bulkhead Module (UBM)	N/A	N/A	SW-FAP1-12UBM
SWK Universal Bulkhead Module (UBM), SWK-L Connector	N/A	N/A	SW-UBM-SWKL
SWK Universal Bulkhead Module (UBM), 4 x LC	N/A	N/A	SW-UBM-4LC
SWK Universal Bulkhead Module (UBM), 4 x MPO	N/A	N/A	SW-UBM-4MPO

## LEARN MORE ABOUT THE SWK SOLUTION:

**NORTH &  
SOUTH AMERICA**  
SUMITOMO ELECTRIC LIGHTWAVE  
201 South Rogers Lane, Suite 100  
Raleigh, NC 27610, USA  
[SumitomoElectricLightwave.com](http://SumitomoElectricLightwave.com)

**EUROPE**  
SUMITOMO ELECTRIC EUROPE  
220 Centennial Avenue  
Elstree, Hertfordshire WD6 3SL UK  
[SumiElectric.com](http://SumiElectric.com)

**APAC**  
SUMITOMO ELECTRIC INDUSTRIES  
1-3-13 Motoasakaka,  
Minato-ku, Tokyo 107-8468, Japan  
[SumitomoElectric.com/Data-Center-Solutions](http://SumitomoElectric.com/Data-Center-Solutions)