

## FTWM-02L-2D Wall Mount Enclosure

Sumitomo Electric Lightwave's (SEL) FTWM-02L-2D Wall Mount Enclosure provides an indoor wall-mountable metal cabinet solution that is easy to install and route for a variety of cable constructions, including ribbon, loose-buffer, tight-buffer, and Air-Blown Fiber®.

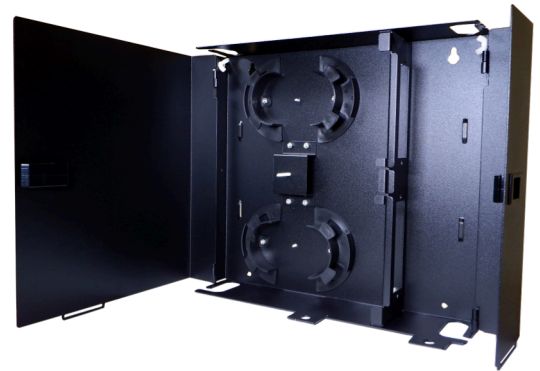
Designed to hold up to 48 LC-Duplex adapters via two LGX Cassettes or LGX Interconnect Panels (Bulkheads) along with ribbon or single-fiber splices, this enclosure is a good solution to house the transition of outside plant cables and indoor distribution cables. In addition, its low profile allows for convenient placement in multiple locations.

### BENEFITS

- LGX component footprint
- Interior is easily accessible for installation, managing fibers, and connections
- Riser allows clearance for fiber routing
- Compact and efficient size
- Ability to lock housing for security

### FEATURES

- Two LGX cassette/interconnect panel (bulkhead) slots
- Durable aluminum housing
- Dual hinged doors with snap latch-security
- Top and bottom cable entry ports
- Pre-installed splice tray mount, riser, and cable management rings
- Raised splice tray mount holds two splice trays (*splice trays not included*)
- Padlock eyelets for both doors (*padlock not included*)



### QUICK SPECS

PORT CAPACITY **48 LC**

FIBER CAPACITY **48f**

CASSETTE/  
PANEL CAPACITY **2**

SPLICE TRAY  
CAPACITY **2**

To learn more information visit [www.SumitomoElectricLightwave.com](http://www.SumitomoElectricLightwave.com)

## SPECIFICATIONS

PRODUCT CLASSIFICATION		PHYSICAL CHARACTERISTICS	
Product Brand/Series	Wall Mount Enclosures	Material Type	Aluminum
Environmental Space	Indoor	Material Finish	Powder Coat
Mounting Type	Wall Mount	Color	Black
Growth Configuration	Empty	Dimensions	H. 13.16 in (334 mm) W. 14.44 in (367 mm) D. 3.06 in (78 mm)
Regional Availability	North America		

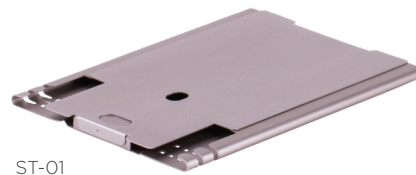
KEY SPECIFICATIONS	
Application	Splicing and Patching
Fiber Capacity	Up to 48 Fiber or 48 LC-Duplex
Cassette/Panel Capacity	Up to 2 LGX Cassettes/Interconnect Panels (Bulkheads)
Splice Tray Capacity	2
Cable Management Access	Front Access
Cable Entry/Exit Access Area	Top; Bottom
Front Door Type	Dual Hinge
Lock Type	Padlock Eyelets for Both Doors ( <i>padlock not included</i> )

## ORDERING INFORMATION

PART NUMBER	CAPACITY				HOLE TYPE	DIMENSIONS (W. x H. x D.)
	PANEL/CASSETTE	LC PORT	FIBER	SPLICE TRAY		
FTWM-02L-2D	2	48 LC	48f	2 Trays	Square/Open	14.44 x 13.16 x 3.06 in (367 x 334 x 78 mm)

## ACCESSORIES

PART NUMBER	SPLICE CAPACITY		DIMENSIONS (W. x H. x D.)
	SINGLE	MASS	
FT24ST2	24f (24 x 1ct)	144f (12 x 12ct)	0.31 x 5.25 x 8.85 in (8 x 133 x 222 mm)
ST-01	24f (24 x 1ct)	144f (12 x 12ct)	0.31 x 5.25 x 7 in (8 x 133 x 178 mm)



To learn more information visit [www.SumitomoElectricLightwave.com](http://www.SumitomoElectricLightwave.com)