

SUMITOMO RECOMMENDED PROCEDURE

SRP SP-F05-031

Cable Payoff Tool

<u>PARA.</u>	<u>CONTENTS</u>
1.0	General
2.0	Safety Precautions
3.0	Tools Required
4.0	Cable Payoff Setup and Usage



SUMITOMO ELECTRIC LIGHTWAVE CORP.

201 South Rogers Lane, Suite 100, Raleigh, NC 27610

(919) 541-8100 or 1-800-358-7378

www.sumitomoelectriclightwave.com

SEL is a Member of the Sumitomo Electric Industries, Ltd. Group

Sumitomo Electric Lightwave reserves the right to improve or modify these specifications without notice.

1.0 General

This procedure describes Sumitomo Cable Payoff Tool used for installation of connectorized cables. This product aids in the installation of multiple connectorized cables into a horizontal cable tray. This product aids in the installation of multiple connectorized cables into a horizontal cable tray. Prior to using the payoff tool a setup location should be decided upon. Different installations and locations will follow different schemes. For this procedure we will assume a conventional setup with plenty of room for cable payoff and using the same fiber count cables on each reel. When multiple cables are installed in a tray it is highly recommended that multiple installers be utilized as it will help routing and better protect the cables. Multiple cable assemblies pulled together allows for quicker installation time. It is recommended to only install a maximum of eight cable assemblies simultaneously using eight turn style reels in two groups of four high.

2.0 Safety Precautions

2.1 The use of safety equipment is strongly recommended during the installation and handling of optical fiber cable.

2.2 To protect the hands, Kevlar gloves are recommended when handling the cable components.

3.0 Tools Required

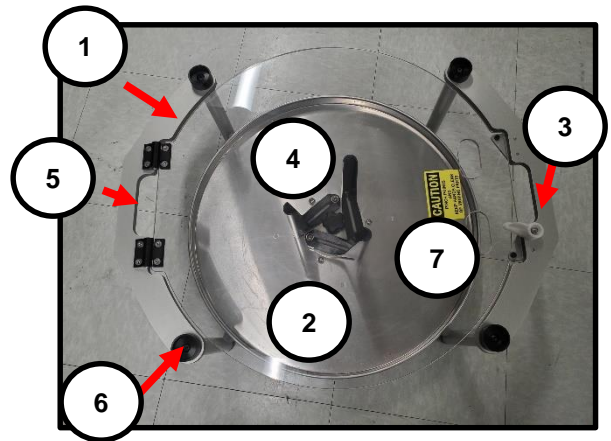
The following is a list of tools and materials required to complete this procedure.

- a. Kevlar Gloves
- b. Safety Glasses

4.0 Cable Payoff Reel Setup

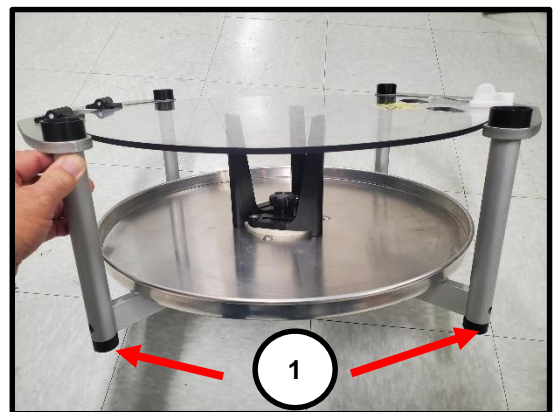
4.1. Overview of Reel Features

- 1 - Sturdy Frame
- 2 - Large Payoff Tray
- 3 - Quick Release Latch
- 4 - Easy Adjust ID Mechanism
- 5 - Built-in Handles
- 6 - Nesting Caps for Stacking
- 7 - Clear Lid



4.1.1 Rubber Feet

- 1 - Keeps payoff reel stable during use.



4.1.2 Cable Payoff Lid



- Quick Release Latch
Turn latch to open



4.1.3 Opening Lid

-



4.1.4 Adjustment Arms

- Adjust Arms for Different Cable Assembly Coil Sizes
- Easy Adjustment Mechanism for Inner Coil Diameters

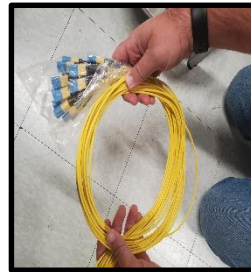


4.1.2 Loading Cable Assemblies

Cable assemblies will be coiled and cut to specified lengths needed. The coiled cable length cannot exceed the turn table tray dimensions (20" X 11.8" X 6.3").

- Minimum ID of coiled cable – 8"
- Maximum ID of coiled cable – 11.8"
- Maximum O.D. of coiled cable – 20"
- Maximum height of coiled cable – 6.3"

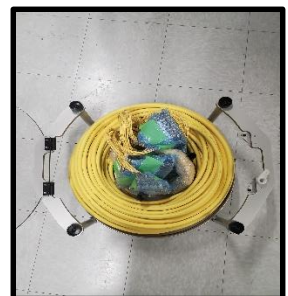
Open turn table lid. Remove coiled cable from box. Place cable onto the turn style tray and adjust the inner arms to correctly fit the cable coil ID. Make sure that all cable reels are stacked correctly and paying off in the same direction before the cable pull begins.



Small Size Cable Assembly



Medium Size Cable Assembly



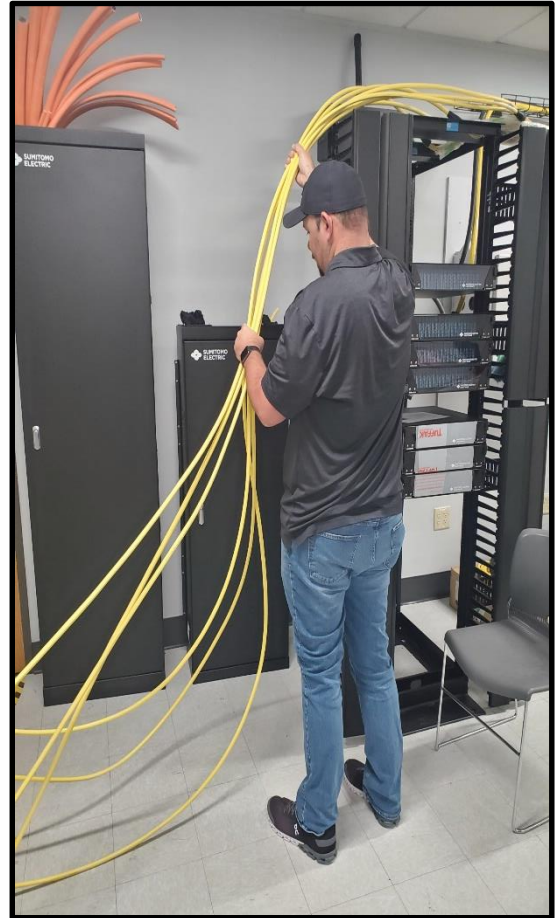
Large Size Cable Assembly

4.1.3 Reel Setup

Should not exceed a maximum of eight cable reels stacked in groups of (4) for cable management and stability.



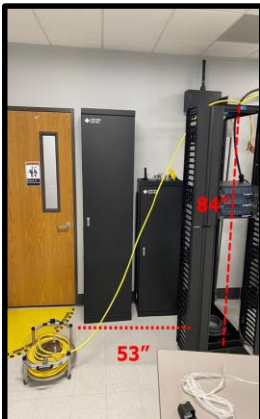
Having a person attend the cable and reel will ensure the correct angle of the cable payoff and also allow monitoring of the cable coming off of the reel during installation. This person should not pull, only guide and handle the cable.



4.1.4 Cable Payoff

Cable management during installation should include two or more persons to safely handle the cable and reels.

Always maintain approximately 65 degree angle if possible to keep cables from dragging on the edge of the cable reel tops.



Example of maximum lengths based on cable or cord OD and turn style reel measurements.

Cord or Cable O.D. (mm)	Max Cable Lengths (m) ft.
15.6	(93) 306
14.0	(115) 379
13.3	(128) 420
11.6	(168) 553
11.3	(177) 582
10.3	(213) 700
8.8	(292) 960
6.9	(476) 1562
3.0	(2518) 8262