

## Cable Payoff Tool

The Cable Payoff Tool aids in the installation of connectorized cables into a horizontal cable tray. While a single tool provides great efficiency, note that multiple tools can be combined to install multiple cable assemblies at the same time.

This tool features an adjustable cable coil hub mechanism that easily adjusts to fit different coil inside diameters, making it suitable for a wide range of applications, as well as assisting in the installation of multiple cable assemblies without the risk of tangling or knotting.

### FEATURES & BENEFITS

- Up to 79% improvement in cable installation time (results from independent 3rd party trial)
- Safer work environment by eliminating trip hazards, no need to manually unroll fiber trunks on the floor.
- Achieves a 50% reduction in necessary manpower, facilitated by the synchronized rotation of cables at a consistent rate, combined with the autobraking functionality that effectively prevents any potential backlash.
- Faster training - the payoff reel's straightforward construction yields quick and effortless training process for technicians.

### APPLICATION & RECOMMENDED USE

Enables the simultaneous installation of up to eight cable assemblies using eight turn style reels arranged in two groups of four. This ensures increased productivity and safety during the installation process.



#### QUICK SPECS

INSTALLATION  
TYPE

**Connectorized  
Cables**

CABLE COIL  
MECHANISM

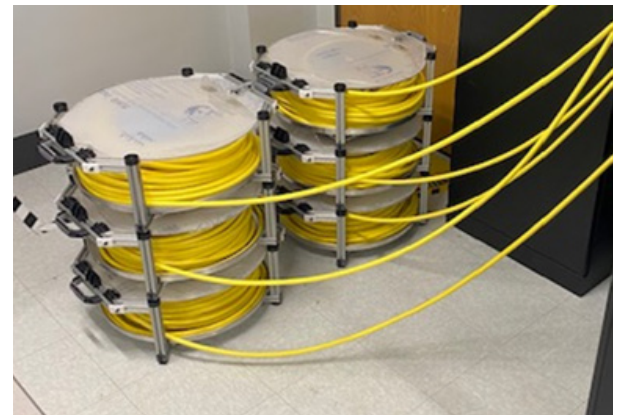
**8.0 x 11.8 in ID**  
(203 x 300 mm)

MAX REEL  
DIAMETER

**19.7 in**  
(500 mm)

STACKING  
CAPACITY

**8**  
(2 Groups x 4 Reels)



**CABLE PAYOFF TOOL COMPONENTS**



- 1. Sturdy Frame
- 2. Built-in Handles
- 3. Quick Release Latch
- 4. Clear Lid
- 5. Nesting Caps for Stacking
- 6. Easy Adjust Cable Coil ID Hub
- 7. Large Payoff Tray

**LOADING CABLE ASSEMBLIES EXAMPLES**



Small Size Cable Assembly



Medium Size Cable Assembly



Large Size Cable Assembly

**SPECIFICATIONS**

PROPERTY	LENGTH
Turn Table Tray Dimensions	20 x 11.8 x 6.3 in (508 x 300 x 160 mm)
Minimum ID of Coiled Cable	8.0 in (203 mm)
Maximum ID of Coiled Cable	11.8 in (300 mm)
Maximum O.D. of Coiled Cable	6.3 in (160 mm)
Maximum Height of Coiled Cable	20 in (508 mm)

\*The coiled cable length cannot exceed the turn table tray dimensions.

**SPECIFICATIONS**

CORD OR CABLE O.D. (MM)	MAX CABLE LENGTHS (M) FT.
15.6	(93) 306
14.0	(115) 379
13.3	(128) 420
11.6	(168) 553
11.3	(177) 582
10.3	(213) 700
8.8	(292) 960
6.9	(476) 1562
3.0	(2518) 8286

\*Example of maximum lengths based on cable fiber count, OD, Wt. and turn style reel measurements.

**ORDERING INFORMATION**

PART NUMBER	DESCRIPTION
CAPT-1	Tool with rotating platen for paying off cable assemblies, 500mm max reel diameter, stackable with hinged lid

To learn more information visit [www.SumitomoElectricLightwave.com](http://www.SumitomoElectricLightwave.com)