

Freeform Ribbon™ Ruggedized Indoor Plenum Cordage

Sumitomo Electric Lightwave's Freeform Ribbon™ Ruggedized Indoor Plenum Cordage feature a flame-retardant outer jacket, a flexible design for easier maneuvering, and the patented 12-fiber pliable Freeform Ribbon™ constructed of 250µm color-coded optical fibers. In addition, this cordage is designed to maximize fiber density to save valuable space in cable trays and indoor enclosures, making it an ideal choice for interconnect applications.

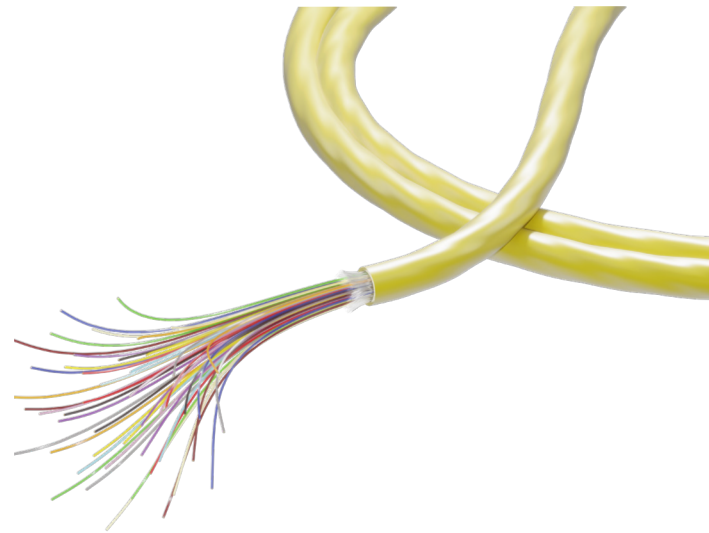
Freeform Ribbon™ enables high fiber density within a small cable diameter which minimizes duct space requirements. The 12-fiber ribbons may be spliced to a conventional ribbon, pliable ribbon, or non-ribbonized (single) fibers, as well as connectorization with both MPO and all industry standard connectors. The non-preferential bend axis allows for easy installation in space-constrained areas..

BENEFITS

- Quick and Easy Fiber Identification
- Robust in Indoor Environments
- Compatible with Mass- and Single-Fiber Fusion Splicers, & Hardware
- Easy to Directly Splice with Lynx-CustomFit™ MPO Splice-On Connectors
- Protects Well from Pulling and Crushing

FEATURES

- Patented Pliable Freeform Ribbon™ Color-Coded Optical Fibers
- PureAccess® G.657.A1 Bend Insensitive Single-Mode Fiber
- Gel Free
- Plenum-Rated Flame Resistance
- Designed for Stronger Mechanical Resistance



QUICK SPECS

CABLE
STRUCTURE

**Interconnect
Cordage**

RIBBON
TYPE

**Freeform
Ribbon™**

FIBER COUNT

24; 48

FIBER SIZE

250 µm

GENERAL	
Application	Indoor
Jacket Color	Yellow
Cable Structure	Interconnect Cordage
Ribbon Type	Freeform Ribbon™

FIBER		
Fiber Type	PureAccess® G.657.A1 Bend-Insensitive Single-Mode Fiber	
Fiber Attenuation Grades	Standard Single-Mode	
Max. Attenuation	1310 nm	0.40 dB/km
	1550 nm	0.30 dB/km

BEND RADIUS	
During Installation (Dynamic)	20 x Cable OD
After Installation (Static)	10 x Cable OD

MECHANICAL CHARACTERISTICS	
Max. Tensile Load (During Installation)	150 lb (660 N)
Max. Recommended Service Load	45 lb (200 N)
Max. Compression Resistance	20 lb/in (35 N/cm)

TEMPERATURE RANGE	
Operation	+32 to +158°F (0 to +70°C)
Storage & Shipping	-40 to +158°F (-40 to +70°C)
Installation	+32 to +140°F (0 to +60°C)

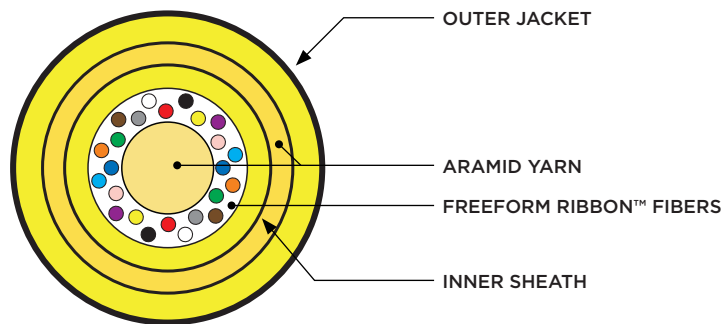
STANDARDS & COMPLIANCE	
Standards	ONFP, FT6
Regulatory Compliance	RoHS, REACH, Conflict Minerals, Proposition 65

ORDERING INFORMATION

PART NUMBER	FIBER COUNT	NOMINAL CABLE OD		NOMINAL WEIGHT		FIBERS PER RIBBON	NO. OF BUNDLES
		IN	MM	LB/KFT	KG/KM		
250 µm							
SE-8IEP0024-B-12	24f	0.18	4.6	15.5	23.0	12f	N/A
SE-8IEP0048-B-12	48f	0.20	5.0	19.1	28.4	12f	N/A

CROSS SECTION

Freeform Ribbon™ Ruggedized Indoor Plenum Cordage



To learn more information visit www.SumitomoElectricLightwave.com