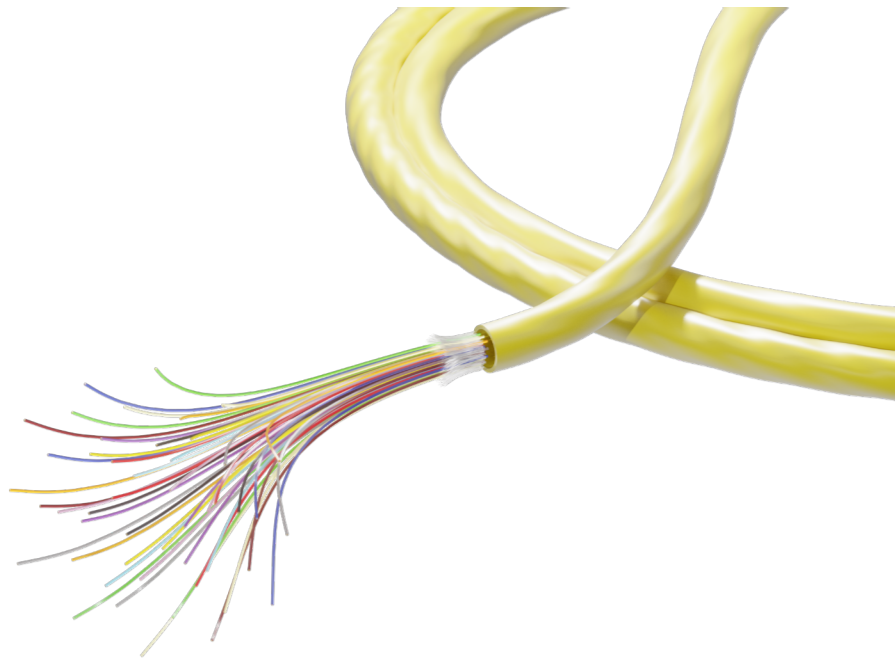


# Freeform Ribbon® Ruggedized Indoor Plenum Cordage

Sumitomo Electric Lightwave's Freeform Ribbon® Ruggedized Indoor Plenum Central Tube Cables feature a flame-retardant outer jacket, a ruggedized design with a second jacket for additional protection, and the patented 12-fiber pliable Freeform Ribbon® constructed of 250 µm color-coded optical fibers. The 12-fiber ribbons may be spliced to a conventional ribbon, pliable ribbon, or non-ribbonized (single) fibers, as well as connectorized with both MPO and all industry-standard connectors. In addition, this cordage is designed to maximize fiber density to save valuable space in cable trays and indoor enclosures, making them an ideal choice for interconnect applications.



## FEATURES

- Patented Pliable Freeform Ribbon® Color-Coded Optical Fibers
- Sumitomo Electric Lightwave PureAccess® Bend-Insensitive Single-Mode Fiber G.657.A1
- Gel Free
- Plenum-Rated Flame Resistance
- Designed for Stronger Mechanical Resistance

## BENEFITS

- Quick and Easy Fiber Identification
- Robust in Indoor Environments
- Compatible with Mass- and Single-Fiber Fusion Splicers, & Hardware
- Easy to Directly Splice with Lynx-CustomFit™ MPO Splice-On Connectors
- Protects Well from Pulling and Crushing

## QUICK SPECS

**Interconnect Cordage**

CABLE STRUCTURE

**Freeform Ribbon®**

RIBBON TYPE

**12-48**

FIBER COUNT

**250 µm**

FIBER SIZE

GENERAL	
Application	indoor
Jacket Color	yellow
Cable Structure	interconnect cordage
Ribbon Type	Freeform Ribbon®

FIBER	
Fiber Type	PureAccess® G.657.A1 Bend-Insensitive Single-Mode Fiber
Fiber Attenuation Grades	Standard Single-Mode
Attenuation	1310 nm   0.40 dB/km
	1550 nm   0.30 dB/km

BEND RADIUS	
During Installation	20 x cable OD
After Installation	10 x cable OD

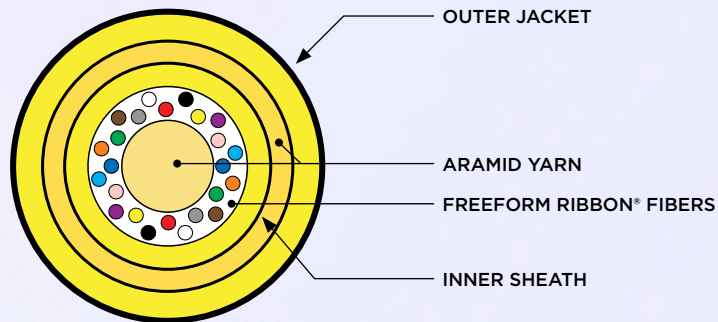
MECHANICAL CHARACTERISTICS	
Max. Tensile Load During Installation	150 lb (660 N)
Max. Recommended Service Load	45 lb (200 N)
Compression Resistance	125 lb/in (220 N/cm)

TEMPERATURE RANGE	
Operation	+32 to +158°F (0 to +70°C)
Storage & Shipping	-40 to +158°F (-40 to +70°C)
Installation	+32 to +140°F (0 to +60°C)

STANDARDS & COMPLIANCE	
Standards	ONFP, FT6
Regularity Compliance	RoHS, REACH, Conflict Minerals, Proposition 65

## ORDERING INFORMATION

PART NUMBER	FIBER COUNT	NOMINAL INNER SHEATH OD		NOMINAL CABLE OD		NOMINAL WEIGHT	
		IN	MM	IN	MM	LB/KFT	KG/KM
<b>250 µm</b>							
SE-8IEP0012-B-12	12f	0.10	2.5	0.16	4.0	12.6	18.7
SE-8IEP0024-B-12	24f	0.12	3.0	0.18	4.6	15.5	23.0
SE-8IEP0048-B-12	48f	0.15	3.8	0.20	5.0	19.1	28.4



### CROSS SECTION

Freeform Ribbon® Ruggedized Indoor Plenum Cordage

To learn more information visit [www.SumitomoElectricLightwave.com](http://www.SumitomoElectricLightwave.com)