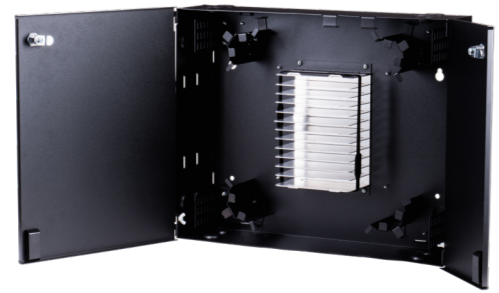
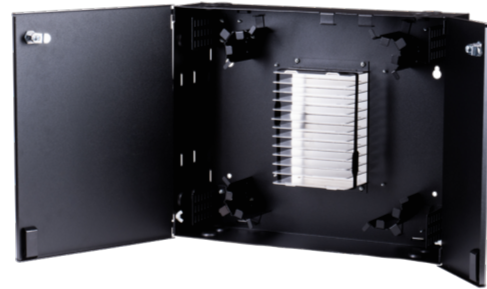


FSPWM-12T Wall Mount Enclosures

The FSPWM-12T Wall Mount Enclosures provide a key-lockable indoor wall-mountable steel cabinet solution that is easy to install for a variety of cable constructions, including ribbon, loose-buffer, and tight-buffer. With a fiber capacity of 2,304 mass-fusion splices via the ability to hold up to 12-splice trays, these Wall Mount Enclosures are a great solution to house the transition of outside plant cables and indoor distribution cables. In addition, its size and low profile enables this enclosure to be deployed in many indoor applications and locations.



FSPWM-12T



BENEFITS

- Allows for Low Profile
- Space for Cable Slack
- Provides Security to Inside of Enclosure
- Nonabrasive Round Corners for Cable Entry/Exit
- Removable & Adjustable Cable/Fiber Management

FEATURES

- Durable Steel Frame
- Removable Dual-Hinge Doors
- 12-Tray Capacity
- Pre-Installed Lacing Bars & Cable-Management Rings
- Key Lockable
- Holes Available in Knockout & Slotted

QUICK SPECS

MOUNTING TYPE	Wall
MATERIAL TYPE	Steel
FIBER CAPACITY	2,304
SPLICE-TRAY CAPACITY	12

ORDERING INFORMATION

PART NUMBER	CASSETTE/PANEL CAP.	LC PORT CAP.	SPLICE TRAY CAP.	HOLE TYPE	DIMENSIONS
FSPWM-12T	2,304f	n/a	12	knockout	21.3 x 17.3 x 4.7 in (438 x 540 x 119 mm)
FSPWM-12T-LCE	2,304f	n/a	12	slotted	21.3 x 17.3 x 4.7 in (438 x 540 x 119 mm)

To learn more information visit www.SumitomoElectricLightwave.com

APPLICATION & RECOMMENDED USE



CONVENTIONAL CABLE TERMINATION

FSPWM-12T-LCE

Using Standard Flat Ribbon Cables;
Pliable Freeform Ribbon® Cables or Cordage

AIR-BLOWN FIBER® TUBE CABLE TERMINATION

FSPWM-12T

Using Tube Cables; Single Tubes

KITTING COMPONENTS

COMPONENT	FSPWM-12T	FSPWM-12T-LCE
Caution Label	1	1
Keys	2	2
Small Tie Wraps	6	30
Medium Tie Wraps	2	4
Hook & Loop Tie Wrap	8	8
Splice Identification Label	1	1

ACCESSORIES

COMPONENT	DESCRIPTION	DIMENSIONS	COMPATIBLE ITEMS
FSPST-24S	splice tray with 24f (24 x 1ct) capacity	0.44 x 4 x 11.75 in (11 x 102 x 299 mm)	FSPWM-12T, FSPWM-12T-LCE
FSPST-16M	splice tray with 192f (16 x 12ct) capacity	0.44 x 4 x 11.75 in (11 x 102 x 299 mm)	FSPWM-12T, FSPWM-12T-LCE

To learn more information visit www.SumitomoElectricLightwave.com