

FTWM-04L Wall Mount Enclosure

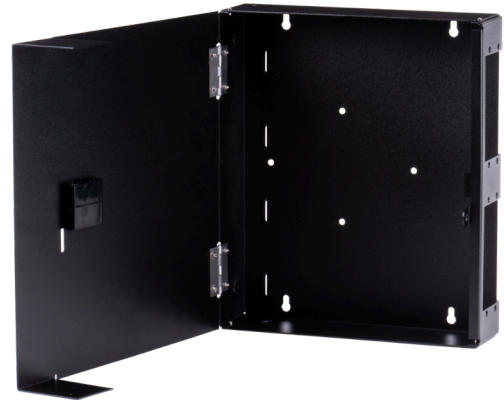
Sumitomo Electric Lightwave's FTWM-04L Wall Mount Enclosure is an easy-to-install, indoor, wall-mountable metal cabinet solution capable of handling a wide range of cable constructions including ribbon, loose-buffer, tight-buffer, or FutureFlex® Air-Blown Fiber® bundles. Designed to hold up to 96 LC-Duplex adapters via four PrecisionFlex® FOX Splice Cassettes or LGX Interconnect Panels along with ribbon or single-fiber splices, this enclosure is a good solution to house the transition of outside-plant cables to indoor-distribution cables. In addition, its low profile allows for convenient placement in a variety of locations.

BENEFITS

- LGX Component Footprint
- Interior is Easily Accessible for Installation and Managing Fibers and Connections
- Compact and Efficient Size
- Lockable Housing for Security

FEATURES

- Durable Aluminum Housing
- Four LGX Cassette/Interconnect Panel Slots
- Holds up to Four Splice Trays, each with 12-Single Fiber Splices or 144f (12-fibers x 12-splices) Mass Fusion Splices per Tray
- Four Knockout Holes for Cable Entry (*grommets included*)
- Lockable via Padlock (*padlock not supplied*)



QUICK SPECS

PORT CAPACITY **96 LC**

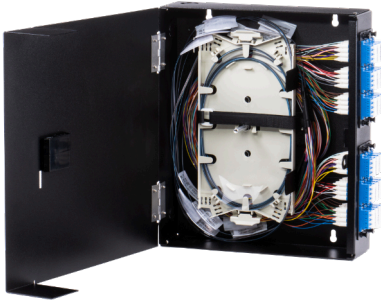
FIBER CAPACITY **144f**

CASSETTE/
PANEL CAPACITY **4**

SPLICE TRAY
CAPACITY **4**

To learn more information visit www.SumitomoElectricLightwave.com

APPLICATION & USAGE



Splicing Application

- Using Interconnect Panels/Bulkheads, Fan-out Kit, and Splice Chip
- Using FTWM-04L Splice Tray Holder and PrecisionFlex® Splice Tray



Cassette Application

- Using PrecisionFlex® FOX Splice or LGX Cassettes

KITTING COMPONENTS

COMPONENTS	DESCRIPTION	QUANTITY
Cable Tie Mount	Used in back for cable management	4
Tie Wraps	Used to attach cables down in the back; 5.75 in x 0.14 in (146 mm x 4 mm)	4
Hook & Loop Tie Wrap	Hook & Loop Tie Wrap; 15 in (382 mm)	1
Alcohol Pad	Used to clean surface area for splice chip	1
Grommet	Snap-in Sealing/Cable Entry Grommet, 1 in. Diameter	4

ORDERING INFORMATION

PART NUMBER	CASSETTE/PANEL CAPACITY	PORT CAPACITY	FIBER CAPACITY	SPLICE TRAY CAPACITY	HOLE TYPE	DIMENSIONS (W. X H. X D.)
FTWM-04L	4	96 LC	144f	4 Trays	Knockout	11.2 x 13.2 x 3.5 in (285 x 336 x 89 mm)

Kitting components with every unit.

INTERCONNECT PANELS/BULKHEADS

Instructions: Create a part number by using this character set and codes.

FT 11 P 223

1 - FACE CONNECTOR TYPE		2 - ADAPTER TYPE/PORT QUANTITY		3 - FIBER TYPE	
LC	LC Connector	6Q	6 Quad/24 Ports (LC Only)	A	SM APC, Green
SC	SC Connector	6D	6 Duplex/12 Ports	B	SM, Blue
FC	FC Connector	3D	3 Duplex/6 Ports	6	OM5, Lime Green
ST	ST Connector	6S	6 Simplex/6 Ports (SC Only)	7	OM3/4, Aqua
				8	OM2, Black
				9	OM1/2, Beige

Additional configurations available upon request.

To learn more information visit www.SumitomoElectricLightwave.com

PRECISIONFLEX® LGX MPO CASSETTES

Instructions: Create a part number by using this character set and codes.

FT 11 - **MP** 22 3 **C** 444 - **L** 567 - 8

1 - FRONT CONNECTOR TYPE		2 - FRONT CONNECTOR COUNT		3 - FRONT CONNECTOR POLISH TYPE		4 - FIBER TYPE	
LC	LC Connector (Max. 24 Ports)	08	8 Connector Ports	U	UPC	OM1	OM1
SC	SC Connector (Max. 12 Ports)	12	12 Connector Ports	A	APC	OM4	OM4 (Compatible with OM2/3)
FC	FC Connector (Max. 12 Ports)	24	24 Connector Ports			OS1	OS1
ST	ST Connector (Max. 12 Ports)					OS2	OS2

5 - REAR MPO CONNECTOR COUNT		6 - MPO GENDER		7 - MPO CONFIGURATON METHOD		8 - OTHER	
1	1 MPO	M	Male/Pinned	A	Method A	(blank)	Not Applicable
2	2 MPOs	F	Female/Unpinned	B	Method B	UNIV	Universal Mount
3	3 MPOs			C	Method C	GRN	Green Adapter
						RED	Red Adapter
						YEL	Yellow Adapter

PRECISIONFLEX® FOX SPLICE CASSETTES

Instructions: Create a part number by using this character set and codes.

FT 11 - **MP** 22 33 444 555 6666

1 - FRONT CONNECTOR TYPE		2 - HOUSING COLOR		3 - FIBER COUNT	
LC	LC Connector	BK	Black	06	6-Fiber
SC	SC Connector			12	12-Fiber
ST	ST Connector			24	24-Fiber (LC Only)

4 - FIBER CONSTRUCTION		5 - FIBER TYPE		6 - SPECIAL	
RBN	Ribbon	OM1	OM1	(blank)	Not Applicable
TBF	Tight Buffer	OM4	OM4 (Compatible with OM2/3)	APFC	APC (Angle-Polished Connector)
		OM5	OM5		
		OS2	OS2		

Kitting components with every unit comprised of fiber protection sleeves, splice sleeve holders, cable grommet, and more. (White housing color option available upon request.)

ACCESSORIES

PART NUMBER	DESCRIPTION
FT-PFST-B-R	PrecisionFlex® Splice Tray with 144f (12 x 12ct) Capacity
FTWM-04L-SPLICETRAY-BRACKET	FTWM-04L Splice Tray Holder; Compatible with FTWM-04L
FPS-1	Single-Fiber Protection Sleeves, Stainless Steel Strength Member, 2.36 in (60 mm); 50 per pack
FPS-40	Single-Fiber Protection Sleeves, Stainless Steel Strength Member, 1.57 in (40 mm); 50 per pack
FPS-6	Mass-Fiber Protection Sleeves, Glass Ceramic Strength Member, 1.57 in (40 mm); 25 per pack
FPS-61-2.6	Pre-Shrunk Single-Fiber Protection Sleeves, Stainless Steel Strength Member, 2.40 in (61 mm); 100 per pack

To learn more information visit www.SumitomoElectricLightwave.com