

FTWM-04L Wall Mount Enclosure

Sumitomo Electric Lightwave's FTWM-04L Wall Mount Enclosure is an easy-to-install, indoor, wall-mountable metal cabinet solution capable of handling a wide range of cable constructions including ribbon, loose-buffer, tight-buffer, or FutureFlex® Air-Blown Fiber® bundles. Designed to hold up to 96 LC-Duplex adapters via 4 PrecisionFlex® FOX Splice Cassettes or LGX interconnect panels along with ribbon or single-fiber splices, this enclosure is a good solution to house the transition of outside-plant cables to indoor-distribution cables. In addition, its low profile allows for convenient placement in a variety of locations.

BENEFITS

- LGX Component Footprint
- Interior is Easily Accessible for Installation and Managing Fibers and Connections
- Compact and Efficient Size
- Lockable Housing for Security

FEATURES

- Durable Aluminum Housing
- Four LGX Cassette/Interconnect Panel Slots
- Holds Up to 4 Splice Trays, Each with 12 Single Fiber Splices or 144f (12 Fibers x 12 Splices) Mass Fusion Splices per Tray
- Four Knockout Holes For Cable Entry (Grommets Included)
- Lockable Via Padlock (Not Supplied)



QUICK SPECS

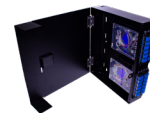
PORT CAPACITY	96 LC
FIBER CAPACITY	144f
CASSETTE/ PANEL CAPACITY	4
SPLICE TRAY CAPACITY	4

APPLICATION & USAGE



SPLICING APPLICATION

- FTWM-04L Splice Tray Holder
- Splice Tray & Splice Chip
- Interconnect Panels & Fan-out Kits



Cassette Application

- PrecisionFlex® FOX Splice or LGX Cassettes

To learn more information visit www.SumitomoElectricLightwave.com

KITTING COMPONENTS

COMPONENTS	DESCRIPTION	QUANTITY
Cable Tie Mount	Used in Back for Cable Management	4
Tie Wraps	Used To Attach Cables Down in the Back, 5.75 in x 0.14 in (146 mm x 4 mm)	4
Hook & Loop Tie Wrap	15 in (382 mm) Hook & Loop Tie Wrap	1
Alcohol Pad	Used To Clean Surface Area for Splice Chip	1
Grommet	Snap-in Sealing/Cable Entry Grommet, 1 in. Diameter	4

ORDERING INFORMATION

PART NUMBER	CASSETTE/ PANEL CAPACITY	PORT CAPACITY	FIBER CAPACITY	SPLICE TRAY CAPACITY	HOLE TYPE	DIMENSIONS (W. X H. X D.)
FTWM-04L	4	96 LC	144f	4	Knockout	11.2 x 13.2 x 3.5 in (285 x 336 x 89 mm)

ACCESSORIES

PART NUMBER	DESCRIPTION
FTWM-04L-SPLICETRAY-BRACKET	FTWM-04L Splice Tray Holder; Compatible with FTWM-04L
FT-PFST-B-R	PrecisionFlex® Splice Tray with 144f (12 x 12ct) Capacity
ST-01	Splice Tray with 144f (12 x 12ct) or 12f (12 x 1ct) Capacity
FPS-40	Single Fiber Protection Sleeves, 1.57 in (40 mm). 10 per pack
FPS-1	Single Fiber Protection Sleeves, 2.36 in (60 mm). 50 per pack
FPS-61-2.6	Pre-shrunk Single Fiber Protection Sleeves, 2.40 in (61 mm); 50 per pack
FPS-6	Mass Fiber Protection Sleeves, 1.57 in (40 mm); 20 per pack

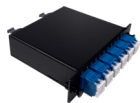
COMPATIBLE PRODUCTS

Additional information regarding each product can be found on our website.



PrecisionFlex® FOX Splice Cassettes

PrecisionFlex® FOX Splice Cassettes accept all types of cordage to eliminate splice trays and terminate cables into cassettes quickly, safely, and securely. The shuttered adapters illuminate when a VFL is used.



PrecisionFlex® LGX Size MPO/MTP Cassettes

PrecisionFlex® LGX Cassettes are standard LGX-sized cassettes for use with Sumitomo Electric Lightwave's PrecisionFlex® LGX Patch Panels, or any LGX-compatible panel. Available with up to 3 MPO/MTP input ports and up to 24 LC Duplex output.



PrecisionFlex® Splice Tray & Holders

Sumitomo Electric Lightwave's PrecisionFlex® Splice Tray & Holders presents a solution that answers the needs for a dynamic space for cable logistics within a panel. Providing a stackable splice tray and holder that can contain 576 fibers at 4RU panel, this solution is made to be compatible with all PrecisionFlex® Sliding Patch Panels.



Interconnect Panels

Sumitomo Electric Lightwave offers a wide range of Interconnect Panels for a variety of connection needs. Interconnect Panels are used to terminate the fiber ends in wall mount enclosures or rack mount patch panels. Each Interconnect Panels is LGX footprint compatible.

To learn more information visit www.SumitomoElectricLightwave.com