

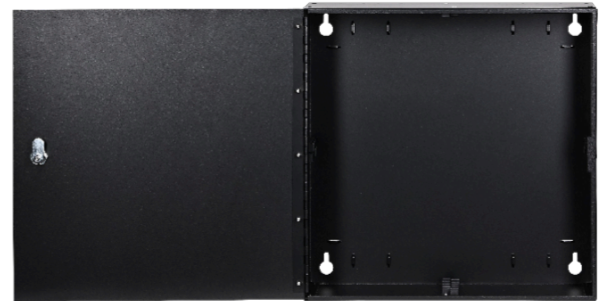
Indoor Wall Mount Tube Distribution Unit

Featuring a scalable and flexible design, Sumitomo Electric Lightwave's Indoor Wall Mount Tube Distribution Unit (TDU) is an enclosure used at tube cable transitions or branching locations. Tube cables are installed through the knockout holes and the tubes joined together using push-fit connectors within the enclosure, facilitating pathways between distribution or termination points. In addition, an optional space-saving tandem replacement door can be used to attach a wall-mounted fiber termination unit for direct termination.



BENEFITS

- Provides low profile for multiple indoor locations
- Modular design
- Secure and protected
- Reduces risk of dust or particulate matter from entering
- Facilitates efficient distribution of pathways between locations
- Tandem door allows for direct transfer of fiber from tube distribution to termination unit



DE06MDU

FEATURES

- Top, bottom, or side entry for cables up to 2-inches in diameter
- Minimizes wall space usage by allowing attachment of a Fiber Termination Unit to its door hinge
- Protective aluminum frame
- Twelve knockout holes
- Pre-installed with four mounted tube clip organizers
- Key-locked hinged door for security
- Optional replacement door for tandem mounting of FTWM-08L wall mount enclosures

QUICK SPECS

TUBE CAPACITY
(APPROX.)

42

KNOCKOUT
HOLES

12

MATERIAL

Aluminum

ENVIRONMENT
TYPE

Indoor

To learn more information visit www.SumitomoElectricLightwave.com

KITTING COMPONENTS

COMPONENTS	QUANTITY
Hose Clamps	6
Bushing	6
Grommet Edging	1
Tube Clip Organizer (Part Number: DETC008)	4
Keys	2

ORDERING INFORMATION

PART NUMBER	DESCRIPTION	TUBE CAPACITY	MATERIAL	COLOR	WEIGHT	DIMENSIONS (W. x H. x D.)
DE06MDU	Indoor TDU (16 in); Modular	42 Tubes (<i>approx.</i>)	Aluminum	Black	5 lb (2.3 kg)	16 x 16 x 4 in (406 x 406 x 102 mm)

ACCESSORIES

PART NUMBER	DESCRIPTION
BETC001	Tube Cutter
DE06KEY	Replacement Lock Set with Two Keys for DE06MDU
DE06MP	Tube Plug (6 mm) for Use in All Tubes Except Plenum; Orange; 1 ea.
DE08MC2	Straight Tube Coupling (8 mm) for Non-Hazardous Areas; Clear/Red; 1 ea.
DEDTTP	Rack-Mounted Tube Distribution Hardware (Standard Capacity); Holds up to Twelve (12) 7-Tube Cables (84 Tubes Total)
DEDTTP2	Rack-Mounted Tube Distribution Hardware (High Capacity); Holds up to Six (6) 19-Tube Cables (114 Tubes Total)
DETC008	Black Plastic Tube Clip Organizer Comes with 10 Organizers and 40 Screws; Each Organizer Can Hold up to 8 Tubes and 4 Screws
FTWM-08L	Wall-Mounted Enclosure (192f or 192 LC capacity); 13 x 14.5 x 5.9 in (330 x 369 x 150 mm)
FTWM-TANDEM-DOOR	Replacement Door for DE06MDU for Tandem Mounting of FTWM-08L



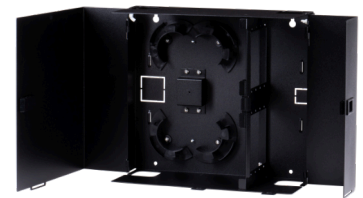
BETC001



DE06MP



DEDTTP



FTWM-08L

To learn more information visit www.SumitomoElectricLightwave.com