

## FTWM-01L Wall Mount Enclosure

Sumitomo Electric Lightwave's FTWM-01L Wall Mount Enclosure is a sturdy interconnect and splice housing unit, capable of holding a single FOX Splice Cassette, LGX Cassette, and Interconnect Panel with a splice chip for up to 24 LC-Duplex or 12 SC connections, or can act as a simple splice protection box. In addition, due to its compact size and low profile, this enclosure can be used in a variety of indoor applications and locations and can even be used in conjunction with two housings to form a single, higher-capacity unit.

### BENEFITS & FEATURES

#### Durable & Compact Enclosure

- 24 Fiber Capacity (24 LC Adapters)
- Protective Aluminum Frame
- Provides Low Profile
- Two Cable Entry Ports

#### One LGX Compatible Space

Compatible with the following:

- FOX Splice Cassettes
- LGX Cassettes
- Interconnect Panels/Bulkheads

#### Door

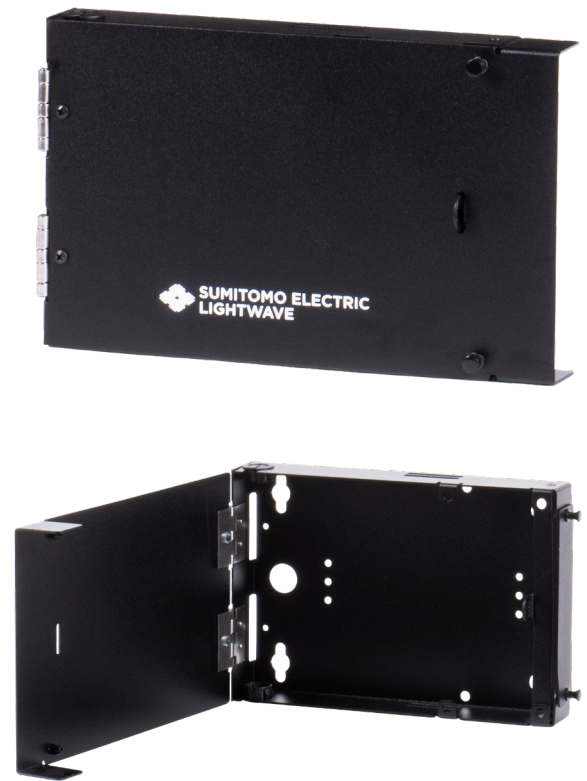
- Padlock eyelets provides further security (*padlock not supplied*)
- Push/pull tabs for easier opening

#### Multiple Mounting Options

- Wall-Mountable
- DIN Rail Mountable

#### Stackable

- Allows for more fiber in a single location
- Up to two enclosures to be stacked

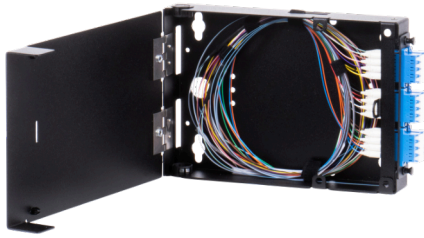


### QUICK SPECS

PORT CAPACITY	<b>24LC/12SC</b>
FIBER CAPACITY	<b>24f</b>
CASSETTE/PANEL CAPACITY	<b>1</b>
HOLE TYPE	<b>Knockout</b>

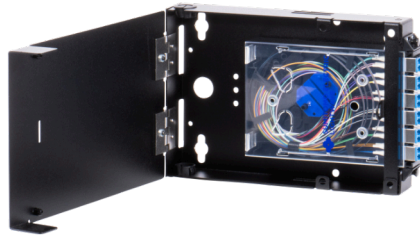
To learn more information visit [www.SumitomoElectricLightwave.com](http://www.SumitomoElectricLightwave.com)

## APPLICATION & USAGE



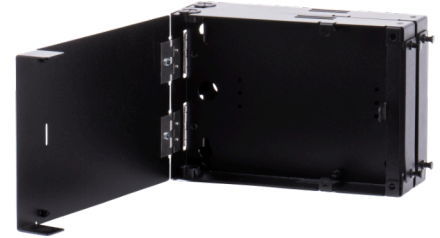
### Interconnect Panel Application

- Using Interconnect Panels/Bulkheads, Fan-out Kit, and Splice Chip



### Cassette Application

- Using FOX Splice or LGX MPO/MTP Cassettes



### Stackable Application

- Allows up to two enclosures to be stacked
- Increases fiber capacity in a single wall space

## KITTING COMPONENTS

COMPONENTS	DESCRIPTION	QUANTITY
Cable Tie Mount	Used in back for cable management	4
Tie Wraps	Used to attach cables down in the back; 5.75 in x 0.14 in (146 mm x 4 mm)	4
Hook & Loop Tie Wrap	Hook & Loop Tie Wrap; 15 in (382 mm)	1
Push/Pull Tabs	Used to stack two enclosures together	1
DIN Rail Mounting Clip	DIN Rail Mounting Clip	2
Alcohol Pad	Used to clean surface area for splice chip	1
Screw, DIN Rail Adapters	Screws for the DIN Rail Mounting Clip to enclosure	4

## ORDERING INFORMATION

PART NUMBER	CASSETTE/PANEL CAPACITY	PORT CAPACITY	FIBER CAPACITY	SPLICE TRAY CAPACITY	HOLE TYPE	DIMENSIONS (W. X H. X D.)
FTWM-01L	1	24 LC (12 SC)	24f	N/A	Knockout	9.9 x 6.1 x 2.2 in (251 x 155 x 56 mm)

Kitting components with every unit.

## INTERCONNECT PANELS/BULKHEADS

**Instructions:** Create a part number by using this character set and codes.

**FT 11 P 22 3**

1 - FACE CONNECTOR TYPE		2 - ADAPTER TYPE/PORT QUANTITY		3 - FIBER TYPE	
<b>LC</b>	LC Connector	<b>6Q</b>	6 Quad/24 Ports (LC Only)	<b>A</b>	SM APC, Green
<b>SC</b>	SC Connector	<b>6D</b>	6 Duplex/12 Ports	<b>B</b>	SM, Blue
<b>FC</b>	FC Connector	<b>3D</b>	3 Duplex/6 Ports	<b>6</b>	OM5, Lime Green
<b>ST</b>	ST Connector	<b>6S</b>	6 Simplex/6 Ports (SC Only)	<b>7</b>	OM3/4, Aqua
				<b>8</b>	OM2, Black
				<b>9</b>	OM1/2, Beige

Additional configurations available upon request.

## PRECISIONFLEX® LGX MPO CASSETTES

**Instructions:** Create a part number by using this character set and codes.

**FT** 11 - **MP** 22 3 **C** 444 - **L** 567 - 8

1 - FRONT CONNECTOR TYPE		2 - FRONT CONNECTOR COUNT		3 - FRONT CONNECTOR POLISH TYPE		4 - FIBER TYPE	
<b>LC</b>	LC Connector (Max. 24 Ports)	<b>08</b>	8 Connector Ports	<b>U</b>	UPC	<b>OM1</b>	OM1
<b>SC</b>	SC Connector (Max. 12 Ports)	<b>12</b>	12 Connector Ports	<b>A</b>	APC	<b>OM4</b>	OM4 (Compatible with OM2/3)
<b>FC</b>	FC Connector (Max. 12 Ports)	<b>24</b>	24 Connector Ports			<b>OS1</b>	OS1
<b>ST</b>	ST Connector (Max. 12 Ports)					<b>OS2</b>	OS2

5 - REAR MPO CONNECTOR COUNT		6 - MPO GENDER		7 - MPO CONFIGURATON METHOD		8 - OTHER	
<b>1</b>	1 MPO	<b>M</b>	Male/Pinned	<b>A</b>	Method A	<b>(blank)</b>	Not Applicable
<b>2</b>	2 MPOs	<b>F</b>	Female/Unpinned	<b>B</b>	Method B	<b>UNIV</b>	Universal Mount
<b>3</b>	3 MPOs			<b>C</b>	Method C	<b>GRN</b>	Green Adapter
						<b>RED</b>	Red Adapter
						<b>YEL</b>	Yellow Adapter

## PRECISIONFLEX® FOX SPLICE CASSETTES

**Instructions:** Create a part number by using this character set and codes.

**FT** 11 - **MP** 22 33 444 555 6666

1 - FRONT CONNECTOR TYPE		2 - HOUSING COLOR		3 - FIBER COUNT	
<b>LC</b>	LC Connector	<b>BK</b>	Black	<b>06</b>	6-Fiber
<b>SC</b>	SC Connector			<b>12</b>	12-Fiber
<b>ST</b>	ST Connector			<b>24</b>	24-Fiber (LC Only)

4 - FIBER CONSTRUCTION		5 - FIBER TYPE		6 - SPECIAL	
<b>RBN</b>	Ribbon	<b>OM1</b>	OM1	<b>(blank)</b>	Not Applicable
<b>TBF</b>	Tight Buffer	<b>OM4</b>	OM4 (Compatible with OM2/3)	<b>APFC</b>	APC (Angle-Polished Connector)
		<b>OM5</b>	OM5		
		<b>OS2</b>	OS2		

Kitting components with every unit comprised of fiber protection sleeves, splice sleeve holders, cable grommet, and more. (White housing color option available upon request.)

## ACCESSORIES

PART NUMBER	DESCRIPTION
<b>FPS-1</b>	Single-Fiber Protection Sleeves, Stainless Steel Strength Member, 2.36 in (60 mm); 50 per pack
<b>FPS-40</b>	Single-Fiber Protection Sleeves, Stainless Steel Strength Member, 1.57 in (40 mm); 50 per pack
<b>FPS-6</b>	Mass-Fiber Protection Sleeves, Glass Ceramic Strength Member, 1.57 in (40 mm); 25 per pack
<b>FPS-61-2.6</b>	Pre-Shrunk Single-Fiber Protection Sleeves, Stainless Steel Strength Member, 2.40 in (61 mm); 100 per pack

To learn more information visit [www.SumitomoElectricLightwave.com](http://www.SumitomoElectricLightwave.com)