

FTWM-01L

Wall Mount Enclosure

Sumitomo Electric Lightwave's FTWM-01L Wall Mount Enclosure is a sturdy interconnect and splice housing unit, capable of holding a single FOX Splice Cassette, LGX Cassette, and Interconnect Panel with a splice chip for up to 24 LC-Duplex or 12 SC connections, or can act as a simple splice protection box. In addition, due to its compact size and low profile, this enclosure can be used in a variety of indoor applications and locations and can even be used in conjunction with two housings to form a single, higher-capacity unit.

BENEFITS & FEATURES

Durable & Compact Enclosure

- 48 Fiber Capacity (24 LC Adapters)
- Protective Aluminum Frame
- Provides Low Profile

One LGX Compatible Space

Compatible with the following:

- FOX Splice Cassettes
- LGX Cassettes
- Interconnect Panels

Door

- Padlock Eyelets Provides Further Security
- Push Pull Tabs for Easier Opening

Multiple Mounting Options

- Wall-Mountable
- DIN Rail Mountable

Stackable

- Allows for More Fiber in a Single Location
- Up to Two Enclosures Can Be Stacked



QUICK SPECS

PORT CAPACITY	24LC/12SC
FIBER CAPACITY	48f
CASSETTE/PANEL CAPACITY	1
HOLE TYPE	Knockout

APPLICATION & USAGE



Interconnect Panel Application

- Using Interconnect Panels, Fan-out Kit, & Splice Chip



Cassette Application

- Using FOX Splice or LGX MPO/MTP Cassettes



Stackable Application

- Allows up to 2 Enclosures to Be Stacked
- Increases Fiber Capacity in a Single Wall Space

KITTING COMPONENTS

COMPONENTS	DESCRIPTION	QUANTITY
Cable Tie Mount	Used in Back for Cable Management	4
Tie Wraps	Used To Attach Cables Down in the Back, 5.75 in x 0.14 in (146 mm x 4 mm)	4
Hook & Loop Tie Wrap	15 in (382 mm) Hook & Loop Tie Wrap	1
Push/Pull Tabs	Used To Stack Two Enclosures Together	1
Din Rail Mounting Clip	Din Rail Mounting Clip	2
Alcohol Pad	Used To Clean Surface Area for Splice Chip	1
Screw, Din Rail Adapters	Screws for the Din Rail Mounting Clip to Enclosure	4

ORDERING INFORMATION

PART NUMBER	CASSETTE/PANEL CAPACITY	PORT CAPACITY	FIBER CAPACITY	SPLICE TRAY CAPACITY	HOLE TYPE	DIMENSIONS (W. X H. X D.)
FTWM-01L	1	24 LC (12 SC)	48f	N/A	Knockout	9.9 x 6.1 x 1.6 in (251 x 155 x 41 mm)

Kitting components with every unit.

ACCESSORIES

PART NUMBER	DESCRIPTION
FT-PFST-B-R	PrecisionFlex® Splice Tray With 144f (12 x 12ct) Capacity
ST-01	Splice Tray With 144f (12 x 12ct) or 12f (12 x 1ct) Capacity
FPS-40	Single Fiber Protection Sleeves, 1.57 in (40 mm). 10 per Pack
FPS-1	Single Fiber Protection Sleeves, 2.36 in (60 mm). 50 per Pack
FPS-61-2.6	Pre-Shrunk Single Fiber Protection Sleeves, 2.40 in (61 mm); 50 per Pack
FPS-6	Mass Fiber Protection Sleeves, 1.57 in (40 mm); 20 per Pack

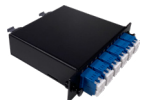
COMPATIBLE PRODUCTS

Additional information regarding each product can be found on our website.



PrecisionFlex® FOX Splice Cassettes

PrecisionFlex® FOX Splice Cassettes accept all types of cordage to eliminate splice trays and terminate cables into cassettes quickly, safely, and securely. The shuttered adapters illuminate when a VFL is used.



PrecisionFlex® LGX Cassettes

PrecisionFlex® LGX Cassettes are standard LGX-sized cassettes for use with Sumitomo Electric Lightwave's PrecisionFlex® LGX Patch Panels, or any LGXcompatible panel. Available with up to 3 MPO/MTP input ports and up to 24 LC Duplex output.



PrecisionFlex® Splice Tray & Holders

Sumitomo Electric Lightwave's PrecisionFlex® Splice Tray & Holders presents a solution that answers the needs for a dynamic space for cable logistics within a single racked panel. Providing a stackable splice tray and holder that can contain 144 fibers at 1RU panel while also maximizing the fiber amount to 576 at 4RU panel, this solution is made to be compatible with all PrecisionFlex® Sliding Patch Panels.



Interconnect Panels

Sumitomo Electric Lightwave offers a wide range of Interconnect Panels for a variety of connection needs. Interconnect Panels are used to terminate the fiber ends in wall mount enclosures or rack mount patch panels. Each Interconnect Panels is LGX footprint compatible.

To learn more information visit www.SumitomoElectricLightwave.com