

SUMITOMO RECOMMENDED PROCEDURE**SRP SP-F05-028****FT-PFST-B-R Ribbon Splice Tray Installation**

PARA.	CONTENTS
1.0	General
2.0	Safety Precautions
3.0	Reference Documents
4.0	Equipment / Tools Required
5.0	Ribbon Installation



SUMITOMO ELECTRIC LIGHTWAVE CORP.
201 South Rogers Lane, Suite 100, Raleigh, NC 27610
(919) 541-8100 or 1-800-358-7378
www.sumitomoelectriclightwave.com

SEL is a Member of the Sumitomo Electric Industries, Ltd. Group
Sumitomo Electric Lightwave reserves the right to improve or modify these specifications without notice.

1. General

1.1 This procedure describes the standard techniques for installing ribbons in Sumitomo Electric's FT-PFST-B-R splice tray. It will review how to install ribbon fibers into the splice tray. The FT-PFST-B-R splice tray is capable of holding up to 12 mass fusion splices.

2. Safety Precautions

Wear safety glasses when working with bare optical fibers / fiber ribbons

3. Reference Documents

Sumitomo Recommended Procedures:

- 3.1 SP-F02-008 Ribbon Indoor Riser Cable Preparation
- 3.2 SP-F02-035 Pliable Ribbon Indoor Riser Cable Preparation
- 3.3 SP-F02-043 Pliable Ribbon Plenum Cable Preparation
- 3.4 SP-F02-018 Ribbon Plenum Cable Preparation

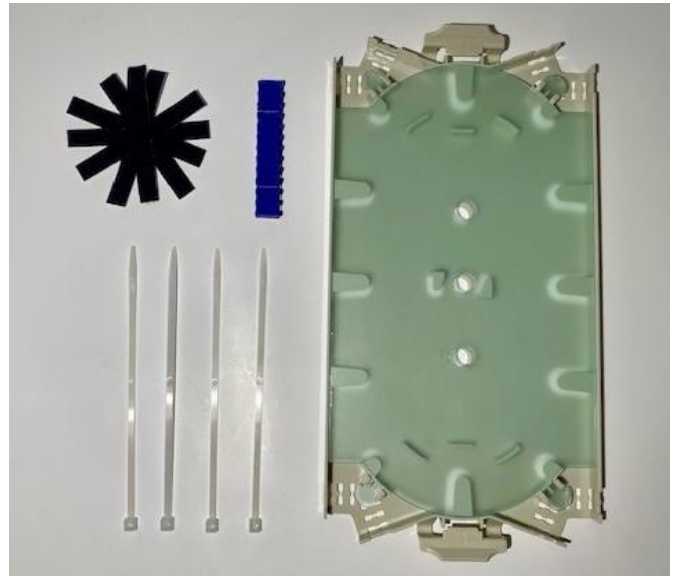
4. Equipment / Tools Required

4.1 The following equipment, tools, and materials are required to complete this procedure.

- 1. FT-PFST-B-R Splice Tray
- 2. Fusion Splicer and related accessories (cleaver, cleaners, splice sleeves, etc.)
- 3. Thermal Jacket Remover
- 4. Scissors
- 5. Tape Measure
- 6. Safety Glasses
- 7. Marking Pen
- 8. Braided Sock Material/Furcation Tubing

4.2 FT-PFST-B-R Kit Components

- A. FT-PFST-B-R Tray
- B. Cover
- C. Adhesive back mass fusion splice holder
- D. Tie Wraps
- E. Hook and Loop Straps



5.0 Ribbon Installation

5.1 Remove cover from the splice tray

Note: Be sure to remove the protective film from the cover.

5.2 Remove the backing from the splice holder and install inside the splice tray.

Note: Splice holder should be installed offset from center so that center hole is unobstructed.



5.4 Prep cable and ribbons to be installed into the splice tray.

Note: Refer to manufacturer's recommended procedures for cable preparations.

5.5 Once ribbons have been prepared, route ribbons through either furcation tubing or a braided sock material. This will help protect ribbons when transitioning into the splice tray.

5.6 If using furcation tubing, secure the tubing to the tray by using the provided tie wraps. Be sure not to over tighten the tie wraps.

5.7 If using braided sock material, first wrap the sock with a hook and loop strip, then secure the sock with a tie wrap on top of the hook and loop strip. Be careful not to over tighten the tie wraps.



5.8 Prepare each ribbon for splicing.

5.9 Splice each ribbon per the manufacturer's instructions.

Note: Place the splice tray as close as possible to the splicer to reduce the possibility of breaking fibers.

5.10 Install each splice into the splice holder and route excess ribbon within the tray.

Note: Be sure not to exceed the minimum bend radius at all times to avoid damage to the fibers or ribbons.

5.11 Place cover back onto splice tray.

5.12 Install PrecisionFlex splice tray bracket into the panel.

5.13 Install tray onto PrecisionFlex splice tray bracket and secure with hook and loop strap.

