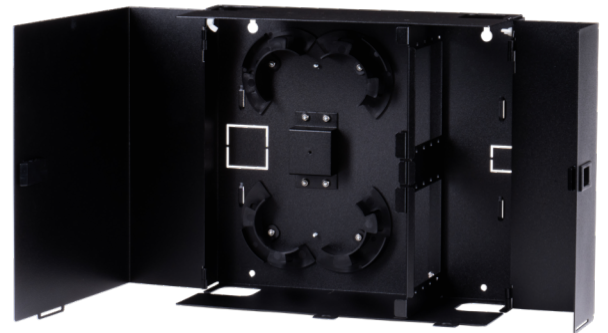


## FTWM-08L Wall Mount Enclosure

Sumitomo Electric Lightwave's FTWM-08L Wall Mount Enclosure provides an indoor wall-mountable metal cabinet solution that is easy to install and route for a variety of cable constructions, including ribbon, loose-buffer, tight-buffer, and Air-Blown Fiber®. Having a fiber capacity of 192 or the ability to hold up to 8 FOX Splice Cassettes, LGX MPO Cassettes or interconnect panels, the Wall Mount Enclosure is a good solution to house the transition of outside plant cables and indoor distribution cables. In addition, its low profile allows for convenient placement in multiple locations.



### BENEFITS

- Allows For Low Profile
- Space For Cable Slack
- Ability To Independently Lock Either Side Of Demarcation For Security
- Riser Allows Clearance For Fiber Routing
- Removal Tray Mount And Management Rings Allows For Cassettes To Be Used
- Knock-Out Access Point Available For Back Entry

### FEATURES

- Durable Aluminum Frame
- Dual Padlock Eyelets
- Removable Dual-Hinge Doors
- 8 LGX Panel Spaces And 5-Tray Capacity
- Pre-Installed Splice-Tray Mount, Riser, & Cable Management Rings
- Nonabrasive Round Corners
- Compatible Tandem Door & Tube-Distribution Unit
- Pre-Installed Lacing Bars & Cable-Management Rings
- Key Lockable
- Holes Available in Knockout & Slotted

### QUICK SPECS

MOUNT TYPE	<b>Wall</b>
FIBER CAPACITY	<b>192</b>
LC CAPACITY	<b>192</b>
PANEL CAPACITY	<b>8</b>

To learn more information visit [www.SumitomoElectricLightwave.com](http://www.SumitomoElectricLightwave.com)

## APPLICATION



**Interconnect Panel Application**  
Using Interconnect Panels, Fan-Out Kit, & Splice Chip



**Cassette Application**  
Using FOX Splice or LGX MPO Cassettes



**Tandem Tube Distribution Application**

- Using FTWM-TANDEM-DOOR & DE06MDU
- Allows for direct transfer of fiber from tube distribution unit to termination unit.

## KITTING COMPONENTS

COMPONENT	QUANTITY
Caution Label	1
Small Tie Wraps	6
Medium Tie Wraps	2
Hook & Loop Tie Wrap	4
Long Screw	1
Wing Nut	1
Port Identification Label	1

## ORDERING INFORMATION

PART NUMBER	CASSETTE/ PANEL CAPACITY	LC PORT CAPACITY	FIBER CAPACITY	SPLICE TRAY CAPACITY	HOLE TYPE	DIMENSIONS (H. X W. X D.)
FTWM-08L	8	192 LC	192f	5 Trays	Square/Open	13 x 14.5 x 5.9 in (330 x 369 x 150 mm)

## ACCESSORIES

PART NUMBER	DESCRIPTION	DIMENSIONS	COMPATIBLE ITEMS
FTWM-TANDEM-DOOR	Replacement Door For DE06MDU, For Tandem Mounting FTWM-08L	15.8 x 16 in (400 x 406 mm)	DE06MDU; FTWM-08L
DE06MDU	Aluminum Indoor Tube Distribution Unit (406 mm) For Air-Blown Fiber®	6 x 16 x 4 in (406 x 406 x 102 mm)	FTWM-TANDEM-DOOR; FTWM-08L

PART NUMBER	DESCRIPTION	SINGLE SPLICE CAPACITY	MASS SPLICE CAPACITY	DIMENSIONS	COMPATIBLE ITEMS
FT24ST2	Splice Tray 8.75"	24f (24 x 1ct)	144f (12 x 12ct)	0.31 x 5.25 x 8.85 in (8 x 133 x 222 mm)	FTWM-08L; All Flex Patch Panels
ST-01	Splice Tray 7", Metal Tray, Metal Cover, for 12 Ribbon or 24	24f (24 x 1ct)	144f (12 x 12ct)	0.31 x 5.25 x 8.85 in (8 x 133 x 222 mm)	FTWM-08L; All Flex Patch Panels

To learn more information visit [www.SumitomoElectricLightwave.com](http://www.SumitomoElectricLightwave.com)