

## SUMITOMO RECOMMENDED PROCEDURE

### SRP SP-F05-021

#### FOX Cassette Installation

<u>PARA.</u>	<u>CONTENTS</u>
1.0	General
2.0	Safety Precautions
3.0	Reference Documents
4.0	Equipment / Tools Required
5.0	Fiber Installation
6.0	Mounting Cassette



SUMITOMO ELECTRIC LIGHTWAVE CORP.  
201 South Rogers Lane, Suite 100, Raleigh, NC 27610  
(919) 541-8100 or 1-800-358-7378  
[www.sumitomoelectriclightwave.com](http://www.sumitomoelectriclightwave.com)

SEL is a Member of the Sumitomo Electric Industries, Ltd. Group  
*Sumitomo Electric Lightwave reserves the right to improve or modify these specifications without notice.*

## 1.0 General

1.1 This procedure describes the standard installation procedure for Sumitomo's FOX Splice Cassette. The FOX Cassette comes in LC, SC, or ST adapters, with port quantities ranging from 6-24 ports.

## 2.0 Safety Precautions

2.1 The use of personal safety equipment (safety glasses, cut-resistant Kevlar gloves, etc.) is recommended during this installation procedure.

## 3.0 Reference Documents

3.1 SRP SP-F04-006

3.2 SRP SP-F04-045

3.3 SRP SP-F05-052

## 4.0 Equipment / Tools Required

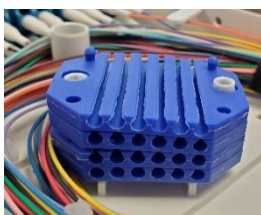
### 4.1 FOX Splice Cassette



Figure 1

### 4.2 Housing Components

1. Body
2. Lid
3. Mounting Ears (Removable)
4. Adapter Faceplate
5. Splice Sleeve Holders – 6 positions for single splices, 2 positions for ribbon splices
6. Fiber Entry Ports



Single Fiber Splice Holder



Ribbon Fiber Splice Holder

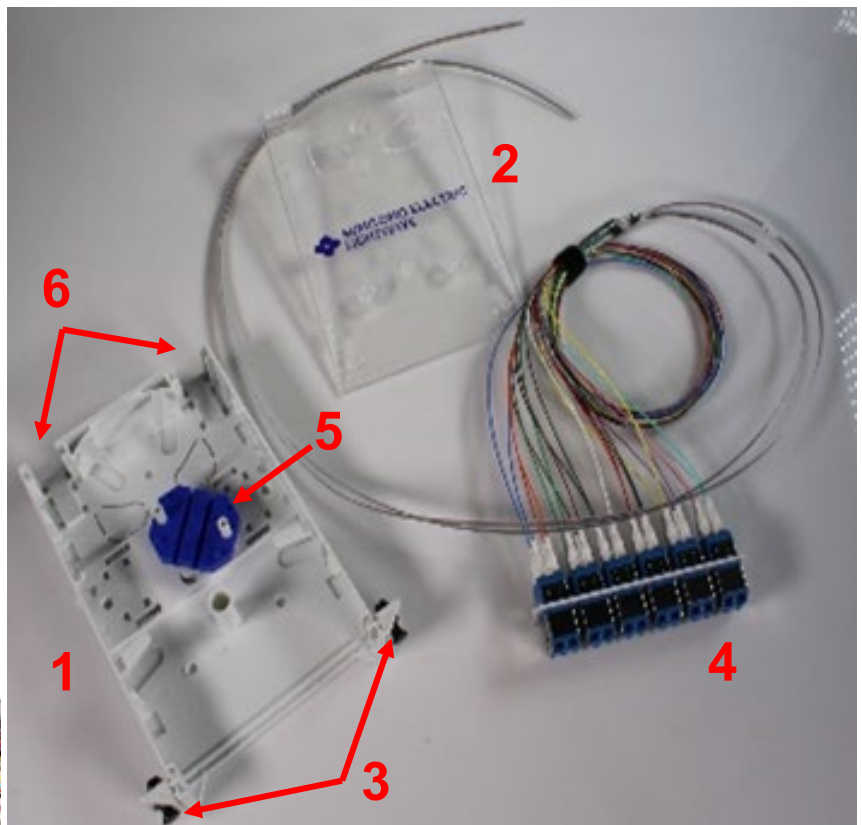


Figure 2

## 4.2 Tools Required

- Wire Strippers (10-20 AWG)
- Fiber Strippers
- Marking pen
- Tape Measure
- Gloves
- Safety Glasses

## 4.3 Included hardware:

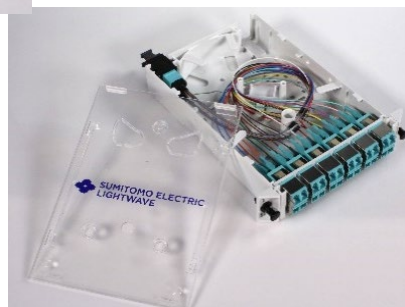
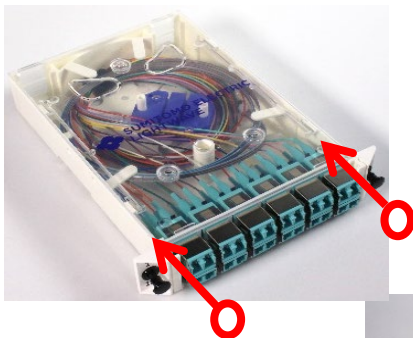
1. Cable Grommet (for fiber bundle entry into cassette)
2. Splice Protection Sleeves (single or ribbon)
3. Hook and Loop Tie Wraps
4. Tie Wraps



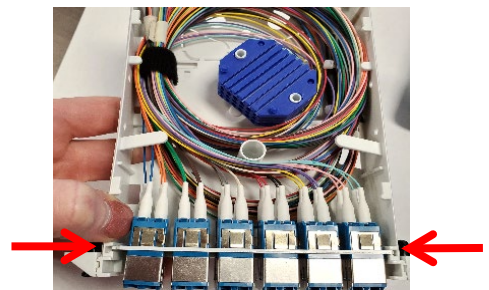
Figure 3

## 5.0 Fiber Installation

**5.1** Remove the lid by firmly pressing down on sides of the lid and slide the lid toward the back of the cassette (away from the faceplate).

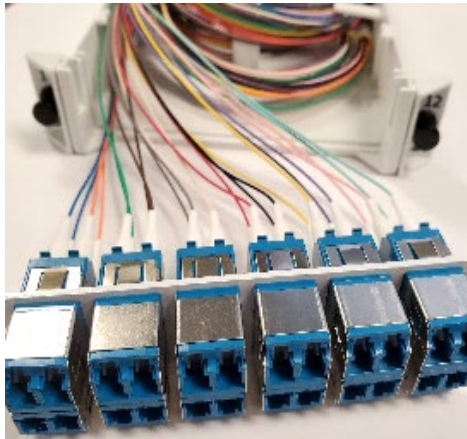
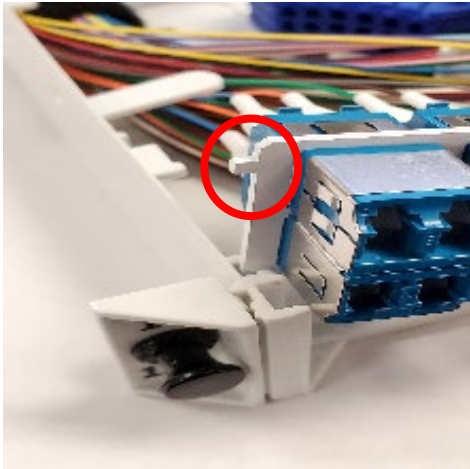


**5.2** To remove the adapter faceplate, gently pry apart the cassette body next to the faceplate.

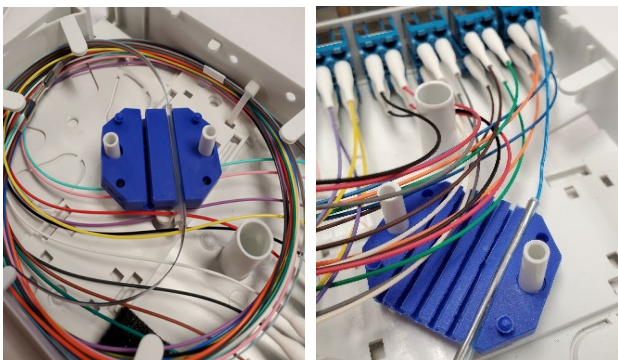


**5.3** The faceplate tabs (circled) will be exposed. Lift the faceplate out of the body.

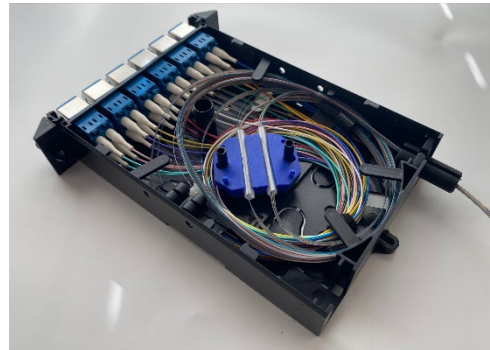
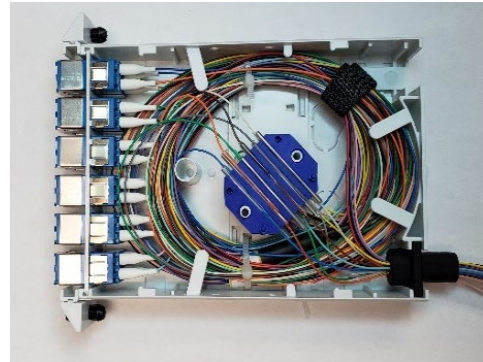
*Note: This is not required, but recommended for ease of use with Tight Buffer Fiber.*



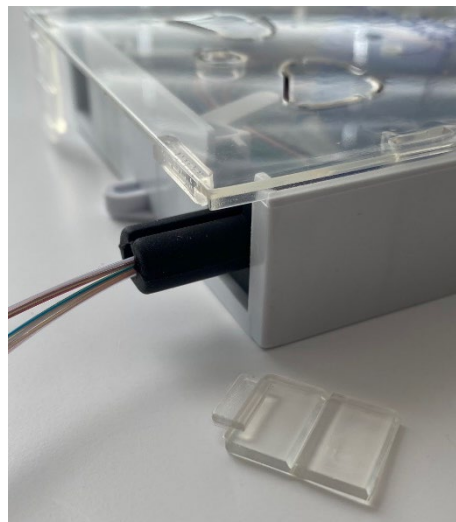
**5.4** Splice fibers and place into splice holders



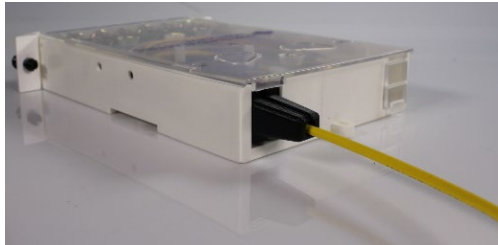
**5.5** Route and organize fibers into the rear entry port using the hook and loop tie wraps. Place grommet in slots of rear entry port.



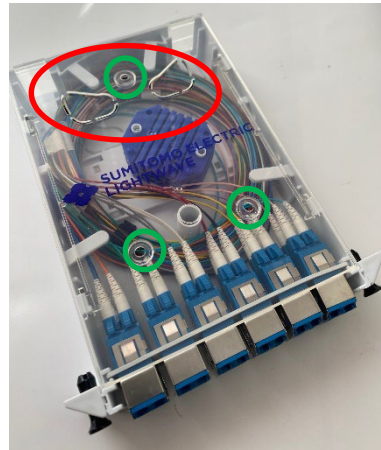
**5.5** Break away the fiber entry tab from the back of the lid where the grommet was placed in the cassette.



**5.6** Place lid on cassette body and slide towards the faceplate. It will lock into place and secure the fibers and grommet.



**6.2** The alternate methods of mounting the FOX Cassettes are shown below.

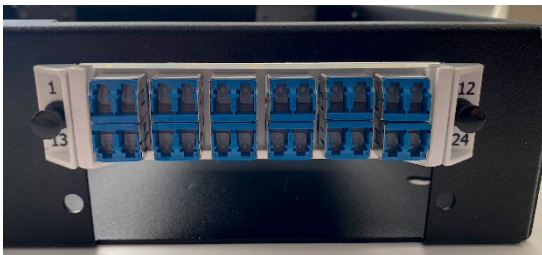


Knockouts (circled red) to route fibers.

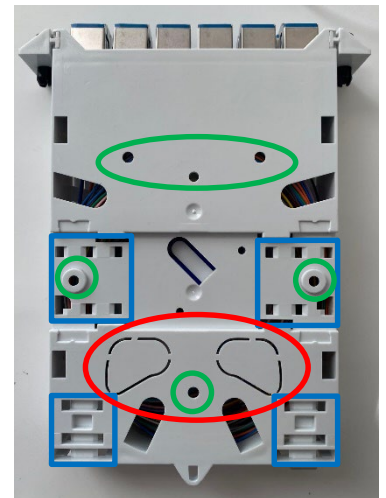
Screw holes (circled green) to pass through lid or body for mounting on a wall.

## 6.0 Mounting the FOX Cassette

**6.1** There are various methods to mounting the FOX Cassettes. The most common method is installing the cassette into an LGX slot using the removable ears.

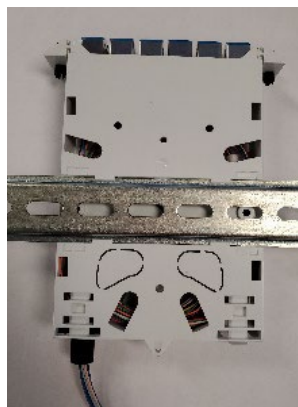
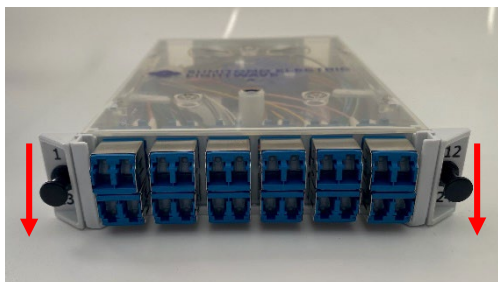


*Note: The ears can be removed by pushing downward on them. This allows users to work on any side of an enclosure and allows for easy rework of fiber routes.*



Tie wrap slots holes (circled blue)

*Note: Cut out knockouts with small flush wire cutters.*



Slide on DIN rails



Clip on DIN rails. (Requires FOX-DINRAIL-ADPT-KIT)