

# PrecisionFlex® FOX Splice Cassettes

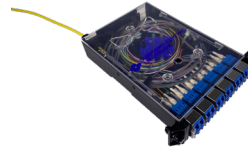
PrecisionFlex® FOX Splice Cassettes are an LGX footprint splice cassette with advantages that improve efficiency in your interconnect panels. The FOX cassette housings combine removable mounting flanges/ears (for front or back installation), removable faceplates and splice modules (for ease of splicing), and allow for all types of cordage (including Air-Blown Fiber® Bundles & Tubes) to be terminated. All in a package that, unlike splice tray solutions, segments those splices from the others in the panel for ease of access in the future.

In addition, the cassettes feature translucent shuttered LC adapters when a VFL is used, a clear cover for visibility, a variety of mounting features, including options for wall- or DIN Rail-mounting (snap-on DIN-Rail mounting accessory available), and can be outfitted with MPO/MTPs.

*\*MTP is registered trademark by US Conec*

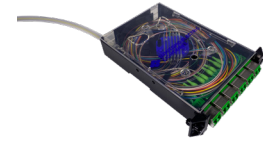


## TERMINATION TYPES



Conventional Termination

- Standard Flat-Ribbon Cables;
- Pliable Freeform Ribbon® Cables & Cordage



Air-Blown Fiber® Termination

- Fiber Bundles
- Tube Cables/Tubes

## FEATURES

- Clear Lid with Tool-Free Removal
- Removable Mounting Ears
- Available in Tight Buffer And Ribbon
- Removable Face Plate & Fanout
- LC-Shuttered Adapters Keep Bulkhead Ferule Clean
- Versatile Mounting Options: Din Rail, Wall Mount, & Competitive Foot Prints Available

## BENEFITS

- Front- and Rear-Panel Access Provides Flexibility and Reduces Risk after Splicing
- Spliced Fibers and Pigtails are Easily Visible Via Clear Cover
- Easy to Access to Splicer
- No Need for Dust Caps on LC Adapters
- Knockouts Allow Cables to Cross Over from Ther Cassettes

## QUICK SPECS

**LC, SC, ST**  
CONNECT TYPE

**6-24**  
PORT QTY.

**Standard, Tight Buffer**  
RIBBON TYPE

**SM, MM**  
FIBER TYPE

To learn more information visit [www.SumitomoElectricLightwave.com](http://www.SumitomoElectricLightwave.com)

## BULKHEAD CAPACITY

PORT QUANTITY	LC PORT CONNECTORS	SC PORT CONNECTORS	ST PORT CONNECTORS
6 Ports			
12 Ports			
24 Ports			

## SINGLE-FIBER CONNECTOR CHARACTERISTICS

PROPERTY	SMF-UPC	SMF-APC	MMF OM1	MMF OM4	MMF OM5
Polish Type	UPC	APC	UPC	UPC	UPC
Housing Color	blue	green	beige	aqua	lime
Insertion Loss (Typical)	≤ 0.25 dB	≤ 0.30 dB	≤ 0.30 dB	≤ 0.30 dB	≤ 0.30 dB
Return Loss	≥ 50 dB	≥ 60 dB	≥ 25 dB	≥ 25 dB	≥ 25 dB
Operating Temperature	-4 to +158°F (-20 to +70°C)				

## MPO CONNECTOR CHARACTERISTICS

PROPERTY	SMF	MMF OM1	MMF OM4	MMF OM5
Insertion Loss (Typical)	≤ 0.75 dB	≤ 0.60 dB	≤ 0.60 dB	≤ 0.60 dB
Return Loss	≥ 55 dB	≥ 55 dB	≥ 55 dB	≥ 55 dB
Operating Temperature	-4 to +158°F (-20 to +70°C)			

## KITTING COMPONENTS

COMPONENTS	RIBBON			TIGHT BUFFER	
	12F	24F	6F	12F	24F
Hook & Loop Tie Wrap	2	2	2	2	2
Double-Sided Tape	2	2	2	2	2
Tie Wrap	2	2	2	2	2
Cable Grommet	1	1	1	1	1
Single-Fiber Protection Sleeve			6	12	24
Ribbon-Fiber Protection Sleeve	1	2			
Single-Splice Sleeve Holder			1	2	4
Ribbon-Splice Sleeve Holder	1	1			

To learn more information visit [www.SumitomoElectricLightwave.com](http://www.SumitomoElectricLightwave.com)

## ORDERING INFORMATION

**Ordering Instructions:** Create a part number by using this character set and codes.

**FT 11 - F 22 33 444 555 - 6666**

1 - FRONT CONNECTOR TYPE		2 - HOUSING COLOR		3 - FIBER COUNT		4 - FIBER CONSTRUCTION		5 - FIBER TYPE		6 - SPECIAL	
<b>LC</b>	LC Connector	<b>SP</b>	White	<b>06</b>	6-Fiber	<b>RBN</b>	Ribbon	<b>OM1</b>	OM1	<b>BLANK</b>	Not Applicable
<b>SC</b>	SC Connector	<b>BK</b>	Black	<b>12</b>	12-Fiber	<b>TBF</b>	Tight Buffer	<b>OM4</b>	OM4	<b>APFC</b>	APC (Angle-Polished Connector)
<b>ST</b>	ST Connector			<b>24</b>	24-Fiber (LC Only)			<b>OM5</b>	OM5	<b>MP12</b>	12-Fiber MPO
								<b>OS2</b>	SM	<b>MP24</b>	24-Fiber MPO

**Example:** FT LC - F BK 24 TBF OS2 \_ \_ \_ \_ | Part No. is: FTLC-FBK24TBFOS2

## ACCESSORIES

PART NUMBER	DESCRIPTION
FOX-DINRAIL-ADPT-KIT	10 DIN Rail adapters; 20 screws for FOX Splice Cassettes
FTRB-LGX-CCH	adapter for the Corning closet connector housing (CCH)
FOX-CABLE GROMMET	cable grommet with 2.75 in (70 mm) diameter hole

To learn more information visit [www.SumitomoElectricLightwave.com](http://www.SumitomoElectricLightwave.com)