

PrecisionFlex® FOX Splice Cassettes

PrecisionFlex® FOX Splice Cassettes are an LGX footprint splice cassette with advantages that improve efficiency in your interconnect panels. The FOX cassette housings combine removable mounting flanges/ears (for front or back installation), removable faceplates and splice modules (for ease of splicing), and allow for all types of cordage (including Air-Blown Fiber® Bundles & Tubes) to be terminated. All in a package that, unlike splice tray solutions, segments those splices from the others in the panel for ease of access in the future.

In addition, the cassettes feature translucent shuttered LC adapters when a VFL is used, a clear cover for visibility, a variety of mounting features, including options for wall- or DIN Rail-mounting (snap-on DIN-Rail mounting accessory available), and can be outfitted with MPO/MTPs.

**MTP is registered trademark by US Conec*

BENEFITS

- Front- and Rear-Panel Access Provides Flexibility and Reduces Risk after Splicing
- Spliced Fibers and Pigtails are Easily Visible Via Clear Cover
- Easy to Access to Splicer
- No Need for Dust Caps on LC Adapters
- Knockouts Allow Cables to Cross Over from the Cassettes

FEATURES

- Clear Lid with Tool-Free Removal
- Removable Mounting Ears
- Available in Tight-Buffer and Ribbon
- Removable Face Plate & Fanout
- LC-Shuttered Adapters Keep Bulkhead Ferrule Clean
- Versatile Mounting Options: Din Rail, Wall Mount, & Competitive Foot Prints Available



QUICK SPECS

CONNECT TYPE

**LC, SC,
& ST**

RIBBON TYPE

**Standard,
Tight
Buffer**

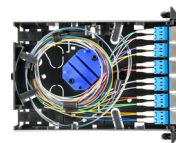
PORT QUANTITY

6-24

FIBER TYPE

SM, MM

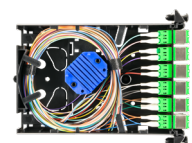
TERMINATION TYPES



FTLC-FBK24RBNOS2

Conventional Termination

- Standard Flat-Ribbon Cables; Pliable Freeform Ribbon™ Cables & Cordage






FTLC-FBK24TFOS2-APFC

Air-Blown Fiber® Termination

- Fiber Bundles
- Tube Cables/Tubes

To learn more information visit www.SumitomoElectricLightwave.com

BULKHEAD CAPACITY

PORT QUANTITY	LC PORT CONNECTORS	SC PORT CONNECTORS	ST PORT CONNECTORS
6 Ports			
12 Ports			
24 Ports			

SINGLE-FIBER CONNECTOR CHARACTERISTICS

PROPERTY	SMF-UPC	SMF-APC	MMF OM1	MMF OM4	MMF OM5
Polish Type	UPC	APC	UPC	UPC	UPC
Housing Color	Blue	Green	Beige	Aqua	Lime
Insertion Loss (Typical)	≤ 0.25 dB	≤ 0.30 dB	≤ 0.30 dB	≤ 0.30 dB	≤ 0.30 dB
Return Loss	≥ 50 dB	≥ 60 dB	≥ 25 dB	≥ 25 dB	≥ 25 dB
Operating Temperature	-4 to +158°F (-20 to +70°C)				

MPO CONNECTOR CHARACTERISTICS

PROPERTY	SMF	MMF OM1	MMF OM4	MMF OM5
Insertion Loss (Typical)	≤ 0.75 dB	≤ 0.60 dB	≤ 0.60 dB	≤ 0.60 dB
Return Loss	≥ 55 dB	≥ 55 dB	≥ 55 dB	≥ 55 dB
Operating Temperature	-4 to +158°F (-20 to +70°C)			

KITTING COMPONENTS

COMPONENTS	RIBBON			TIGHT BUFFER	
	12F	24F	6F	12F	24F
Hook & Loop Tie Wrap	2	2	2	2	2
Double-Sided Tape	2	2	2	2	2
Tie Wrap	2	2	2	2	2
Cable Grommet	1	1	1	1	1
Single-Fiber Protection Sleeve	N/A	N/A	6	12	24
Ribbon-Fiber Protection Sleeve	1	2	N/A	N/A	N/A
Single-Splice Sleeve Holder	N/A	N/A	1	2	4
Ribbon-Splice Sleeve Holder	1	1	N/A	N/A	N/A

To learn more information visit www.SumitomoElectricLightwave.com

ORDERING INFORMATION

Instructions: Create a part number by using this character set and codes.

FT 11 - **F** 22 33 444 555 - 6666

1 - FRONT CONNECTOR TYPE		2 - HOUSING COLOR		3 - FIBER COUNT		4 - FIBER CONSTRUCTION		5 - FIBER TYPE		6 - SPECIAL	
LC	LC Connector	BK	Black	06	6-Fiber	RBN	Ribbon	OM1	OM1	(leave blank)	Not Applicable
SC	SC Connector			12	12-Fiber	TBF	Tight Buffer	OM4	OM4 (Compatible with OM2/3)	APFC	APC (Angle-Polished Connector)
ST	ST Connector			24	24-Fiber (LC Only)			OM5	OM5		
								OS2	SM		

White housing color option available upon request.

Example: FT LC - F BK 24 TBF OS2 _____ | Part No. is: FTLC-FBK24TBFOS2
 FOX Splice Cassette, Black Housing, 24 fibers, LC, OS2, Tight Buffer

ACCESSORIES

PART NUMBER	DESCRIPTION
FOX-DINRAIL-ADPT-KIT	10 DIN Rail adapters; 20 Screws for FOX Splice Cassettes
FTRB-LGX-CCH	LGX Cassette Retro Fit Bracket to CCH. Adapts an LGX Footprint Cassette or Interconnect Plate to a Corning CCH Type Panel
FOX-CABLE GROMMET	Cable Grommet with 2.75 in (70 mm) Diameter Hole