

SUMITOMO RECOMMENDED PROCEDURE**SRP SP-F05-035****FSPST-24S Single Fiber Splice Tray Installation**

PARA.	CONTENTS
1.0	General
2.0	Safety Precautions
3.0	Reference Documents
4.0	Equipment / Tools Required
5.0	Fiber Installation



SUMITOMO ELECTRIC LIGHTWAVE CORP.
201 South Rogers Lane, Suite 100, Raleigh, NC 27610
(919) 541-8100 or 1-800-358-7378
www.sumitomoelectriclightwave.com

SEL is a Member of the Sumitomo Electric Industries, Ltd. Group
Sumitomo Electric Lightwave reserves the right to improve or modify these specifications without notice.

1. General

1.1 This procedure describes the standard techniques for installing fibers in Sumitomo Electric's SP24 splice tray. It will review how to install single fibers. The SP24 splice tray is capable of holding up to 24 single fiber splices.

2. Safety Precautions

Wear safety glasses when working with bare optical fibers.

3. Reference Documents

FutureFLEX Fiber Bundle Stripping Procedure [SRP SP-F04-006](#)

4. Equipment / Tools Required

4.1 The following equipment, tools, and materials are required to complete this procedure.

1. SP24 Splice Tray
2. Multi-gage wire stripper (10 – 20 gage)
3. Fiber Stripper
4. Scissors
5. Fusion Splicer and related accessories (cleaver, cleaners, splice sleeves, etc.)
6. Tape Measure
7. Safety glasses
8. Marking pen

4.2 ST-01 Kit Components

1. SP24 Tray
2. Cover
3. Adhesive 12 position splice chip (2)
4. Hook and Loop dots (4 pairs)
5. Zip Tie (4)

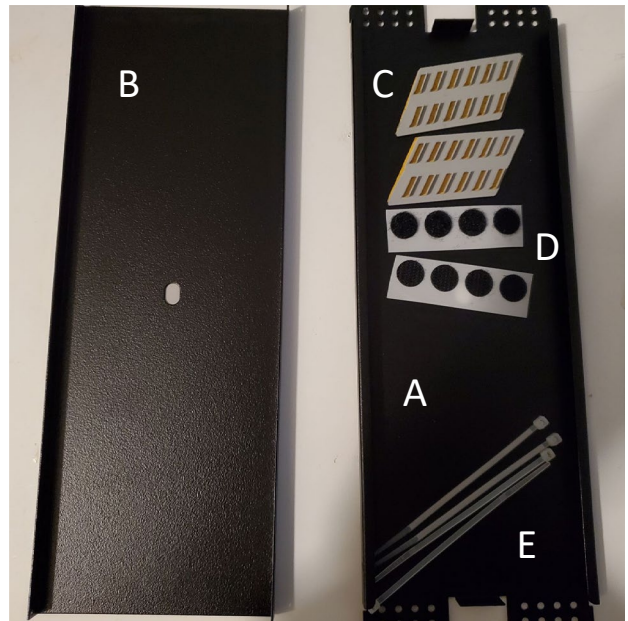


Figure 1

5.0 Fiber Installation

5.1 Remove cover from the splice tray

5.2 Remove the backing from the splice chips and install onto the back of the splice tray. Do not block the mounting hole if you intend to use it.



Figure 2

5.3 Prep cable and fibers to be installed into the splice tray.

Note: Refer to manufacturer's recommended procedures for cable preparations.

5.4 Once fibers have been prepared, secure the fibers to the splice tray with included zip ties. Do not to overtighten the zip ties.

Note: Install zip ties with buckle on the back/outside of the tray.

5.5 Prepare each fiber for splicing.

5.6 Splice each fiber per the manufacturer's instructions.

Note: Place the splice tray as close as possible to the splicer to reduce the possibility of breaking fibers.

5.7 Install each splice into the splice holder and route excess fiber within the tray. See **Figure 1** for recommended fiber routing.

Be sure not to exceed the minimum bend radius at all times to avoid damage to the fibers or ribbons.

5.8 (Optional) Attach hook and loop dots to the back of the tray to enable stacking, or adhesion if not using a mounting bolt.

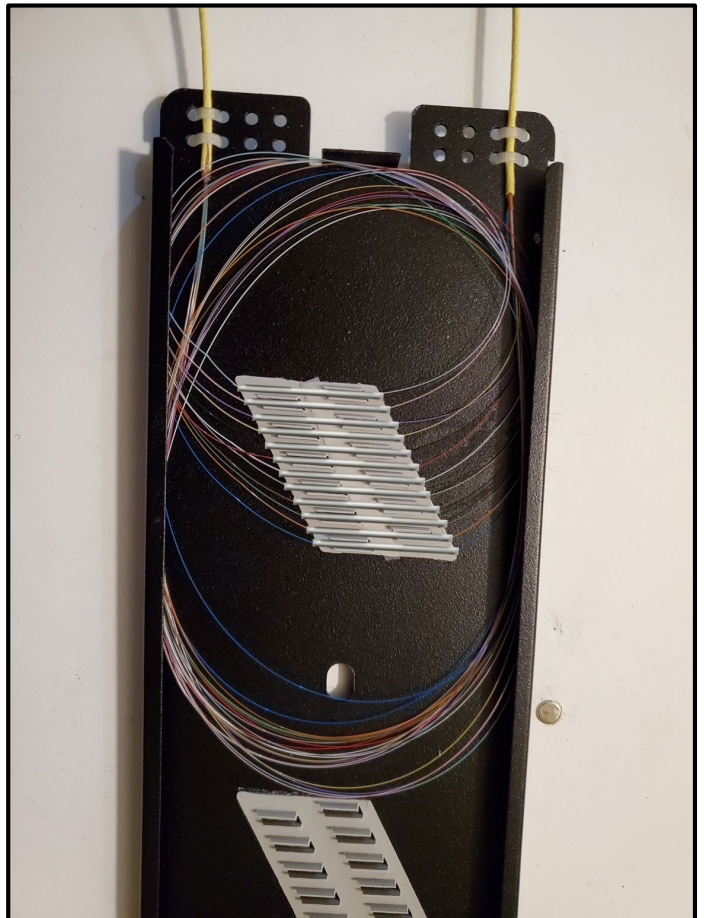


Figure 3