

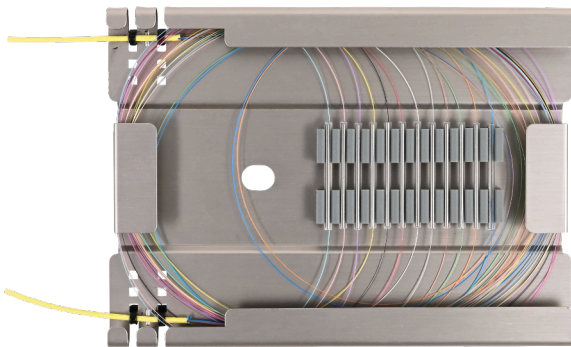
Splice Trays

Sumitomo Electric Lightwave's (SEL) Splice Trays provide easy fiber installation in almost any condition. Designed as the central point to safely route, terminate, and store exposed fibers, each splice tray are engineered with durability. With no rough edges, fiber can be easily held down and spliced to any desired positions. In addition, each splice tray supports all of SEL's compatible patch panels and wall-mount enclosures.

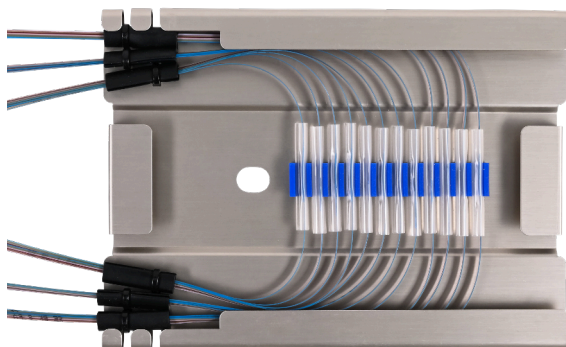
FEATURES & BENEFITS

- Durable aluminum frame
- Splice chips can be placed where needed
- Compatible with SEL's Flex Patch Panels and Wall-Mountable Enclosures

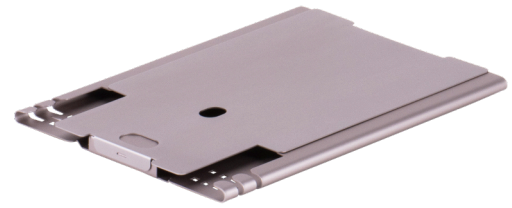
APPLICATION



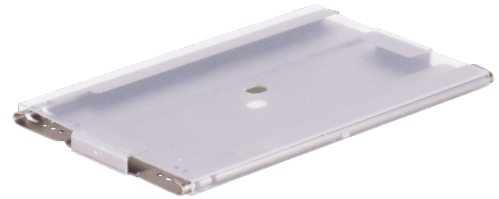
ST-01 (Single Spliced Fibers)



ST-01 (Ribbon Spliced Fibers)



ST-01



FT24ST2



FSPST-24S



FSPST-16M

PART NUMBER	SPLICE CAPACITY	
	SINGLE	MASS
FSPST-16M	N/A	192f (16 x 12 ct)
FSPST-24S	24f (24 x 1 ct)	N/A
FT24ST2	24f (24 x 1 ct)	144f (12 x 12 ct)
ST-01	24f (24 x 1 ct)	144f (12 x 12 ct)

To learn more information visit www.SumitomoElectricLightwave.com



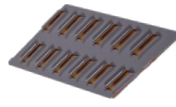
Fiber Retention Sleeve



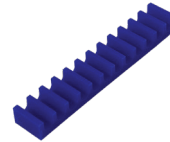
Hook & Loop Dots



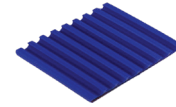
Single Splice Chip (Type 1)



Single Splice Chip (Type 2)



Mass Splice Chip (Type 1)



Mass Splice Chip (Type 2)



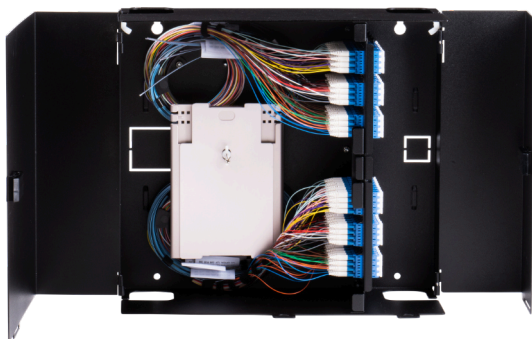
Zip Tie

KITTING COMPONENTS

COMPONENTS	DESCRIPTION	FSPST-16M	FSPST-24S	FT24ST2	ST-01
Fiber Retention Sleeve	Protects and relieves pressure up to 12-fibers when tied down	—	—	8	8
Hook & Loop Dots	Used to station splice tray in enclosure	4	4	—	—
Single Splice Chip (Type 1)	Holds up to 12-single fiber protection sleeves	—	—	2	2
Single Splice Chip (Type 2)	Holds up to 12-single fiber protection sleeves	—	2	—	—
Mass Splice Chip (Type 1)	Holds up to 12-ribbon fiber protection sleeves	—	—	1	1
Mass Splice Chip (Type 2)	Holds up to 12-ribbon fiber protection sleeves	2	—	—	—
Zip Tie	Used to attach each fiber down to the splice tray; 5.75 x 0.14 in (146 x 4 mm)	4	4	8	8

ORDERING INFORMATION

PART NUMBER	SPLICE CAPACITY		DIMENSIONS (W. X H. X D.)	COMPATIBLE ITEMS
	SINGLE	MASS		
FSPST-16M	N/A	192f (16 x 12 ct)	0.44 x 4 x 11.75 in (11 x 102 x 299 mm)	Wall-Mountable Enclosures: • FSPWM-12T; FSPWM-12T-LCE
FSPST-24S	24f (24 x 1 ct)	N/A	0.44 x 4 x 11.75 in (11 x 102 x 299 mm)	Wall-Mountable Enclosures: • FSPWM-12T; FSPWM-12T-LCE
FT24ST2	24f (24 x 1 ct)	144f (12 x 12 ct)	0.31 x 5.25 x 8.85 in (8 x 133 x 222 mm)	All Flex Patch Panels: • FT01RU3P; FT02RU6P; FT02RU6PX; FT03RU9P; FT04RU12P; FT04RU12PX Wall-Mountable Enclosures: • FTWM-02L-2D; FTWM-04L-2D; FTWM-08L
ST-01	24f (24 x 1 ct)	144f (12 x 12 ct)	0.31 x 5.25 x 7 in (8 x 133 x 178 mm)	All Flex Patch Panels: • FT01RU3P; FT02RU6P; FT02RU6PX; FT03RU9P; FT04RU12P; FT04RU12PX Wall-Mountable Enclosures: • FTWM-02L-2D; FTWM-04L-2D; FTWM-08L



Wall-Mountable Enclosure (FTWM-08L); ST-01



Flex Patch Panel (FT02RUPX); ST-01

To learn more information visit www.SumitomoElectricLightwave.com