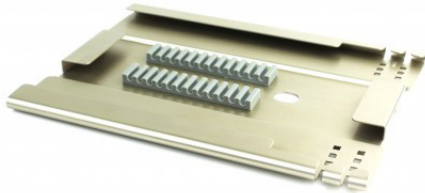


Splice Tray



Description

Sumitomo Electric Lightwave's newest product to the Quantum Fusion Splicer's line of accessories is the splice tray – built to provide easy installations in almost any condition. Engineered with a flexible structure for easy storage, the splice tray can easily be stored in the splicer case providing easy transportation for installers. Not only is the

splice tray designed for durability and storage, the tray also is designed to facilitate faster installations with the fiber positioning guides. The guides provide easier fiber alignment reducing splice times and also features an adjustable splice tray clamping support system to secure and accommodate a wide variety of splice trays.

Ordering Information

Sumitomo P/N	Description
ST-01	Splice Tray, 7"Metal Tray, 7"Plastic Cover