

Lynx-CustomFit™ Splice-On Connectors MPO

Sumitomo Electric Lightwave's Lynx-CustomFit™ Splice-On Connectors MPO are the industry's first MPO fusion splice-on field installable connector for customized, on-site terminations. They are easily terminated with minimal tooling, and compatible with other MPO connectors. Like all Lynx-CustomFit™ SOCs, the MPO allows technicians to make permanent terminations with the exact cable length for fast and easy installations, upgrades, and repairs at the work site. The on-site customization facilitated by the Lynx-CustomFit™ SOC connectivity method eliminates the risk of shorts and slack, repair lag, and logistic delays associated with preterminated cables and the need for splice trays required for pigtails — making the Lynx-CustomFit™ SOC MPO your best choice in customized fiber termination.

FEATURES

- Industry's First MPO Field Installable, Fusion Splice-On Connector
- Cuts Time, Material, and Labor Costs
- Eliminates Logistical Delays of Pre-Engineered Cables
- Guide Pins for Precision Alignment (Male Only)
- Color Coded Housing
- Compatible with Optical Ribbon Fiber and Round Cord 12ct. Loose Tube
- Customizable Field Polarity Management
- EIA/TIA-604-5, FOCIS 5, IEC-61754-7 Compliant

SPECIFICATIONS

Connector Type	SMF: Low Loss	SMF: Standard	MMF: OM1	MMF: OM2	MMF: OM3/OM4/OM5
Polish	Angled	Angled	Flat	Flat	Flat
Housing Color	Yellow	Green	Beige	Black	Aqua
Typical Insertion Loss	.10dB	.25dB	.10dB	.10dB	.10dB
Maximum Insertion Loss	≤ .35dB	≤ .75dB	≤ .35dB	≤ .35dB	≤ .35dB
Return Loss	≥ 60dB	≥ 60dB	≥ 20dB	≥ 20dB	≥ 20dB



LYNX-CUSTOMFIT™ MPO PART NUMBERING GUIDE

LYNX2-MPO12 A
(A = Connector Gender)

B B
(BB = Fiber)

C C
(CC = Fiber Type)

D D D D D
(DDDDD = Fiber Media)



M
(Male)

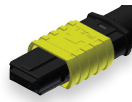


F
(Female)

POLARITY

Specifying polarity is not required.
See installation instructions.

S M
(Single Mode)



L L
Low Loss
(IL ≤ 35dB RL ≥ 60dB)
YELLOW HOUSING



S L
Standard Loss
(IL ≤ 75dB RL ≥ 60dB)
GREEN HOUSING

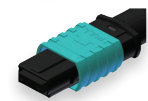
M M
(Multi Mode)



O 1
Multi Mode 62.5µm
(IL ≤ 35dB RL ≥ 20dB)
BEIGE HOUSING



O 2
Multi Mode 50µm
(IL ≤ 35dB RL ≥ 20dB)
BLACK HOUSING



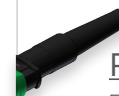
O 3
Multi Mode 50µm
Laser Optimized
(IL ≤ 35dB RL ≥ 20dB)
OM3, OM4 and OM5 Compatible
AQUA HOUSING



R B N _ _
For 12f Ribbon
(No Jacket)



R B C _ _
For 12f Ribbon
(With Jacket)



R C 3 . 0
For 3.0mm Cord

EXAMPLES

(LYNX2-MPO12-ABBCC-DDDDD-EEE)



LYNX2 - MPO12 M - S M L L - R B N _ _

Part Number is: LYNX2-MPO12M-SMLL-RBN



LYNX2 - MPO12 F - M M O 3 - R C 3 . 0

Part Number is: LYNX2-MPO12F-MM03-RC3.0

RELATED PRODUCTS

PART NAME	DESCRIPTION
LYNX-CORDTOOL-2.0-3.0	Splice-On Connector Cord Prep Tool, 2.0 to 3.0mm Cord OD
FHM-12-MPO-MTL	Lynx-Customfit™ MPO Metal Ferrule Holder
LYNX2-ATK2-MPO	Assembly Platform with Integrated Fiber Arrangement Tool for use with RC3.0 Connectors
LYNX2-HRT-1	MPO Outer Housing Disassembly Tool
FTA-02	Fiber Arrangement and Ribbonization tool with clamps on both ends for making shorter ribbons with a single end for Lynx-CustomFit™ MPO, or longer ribbons by using both ends for a ribbon to ribbon fusion splice
FA-03	Fiber Arrangement and Ribbonization tool with a single fiber clamp for making shorter ribbons for use with Lynx-CustomFit™ MPOs
FAC-24	Consumables for Fiber Arrangement Tool (Makes Approx. 30 Ribbons, for use with FA-03 or FTA-02)
LYNX2-TKU-MPO-RC	Lynx-CustomFit™ MPO Tool Kit with Fiber Arrangement and Ribbonization Tool (FA-03), Cord Tool (LYNX-CORDTOOL-2.0-3.0), Lynx-CustomFit™ Metal Ferrule holder (FHM-12-MPO-MTL), Fiber Optic Shears (FOS-01), Ribbonizing Glue and Pads (FAC-24), and carrying bag (LYNX-BAG).
LYNX2-TKU-MPO-RCATK	Lynx-CustomFit™ MPO Tool Kit with Assembly Platform (LYNX2-ATK2-MPO), Cord Tool (LYNX-CORDTOOL-2.0-3.0), Lynx-CustomFit™ Metal Ferrule holder (FHM-12-MPO-MTL), Fiber Optic Shears (FOS-01), Ribbonizing Glue and Pads (FAC-24), and carrying bag (LYNX-BAG).
TYPE-Q102-M12p-KIT-MPO	Quantum Mass Fusion Splicer (TYPE-Q102-M12p), Cleaver (FC-6Rp), Thermal Jacket Remover (JR-7), Spare Electrodes (ER-10), Ribbon Splice Protection Sleeves (FPS-6-5P), 12ct Ribbon Fiber Holders (FHM-12V), 250um Single Fiber Holders (FHS-025), Cleaning Kit (FUS-CLN-KIT), V-Groove Brush (VGB-004), Power Cord, Manual, Hard Case, MPO Assembly Platform (LYNX2-ATK2-MPO), Consumable Kit (FAC-24), 2mm/3mm Cord Tool (LYNX-CORDTOOL-2.0-3.0), Fiber Optic Shears (FOS-01), MPO Metal Holder (FHM-12-MPO-MTL)

To learn more information visit www.SumitomoElectricLightwave.com