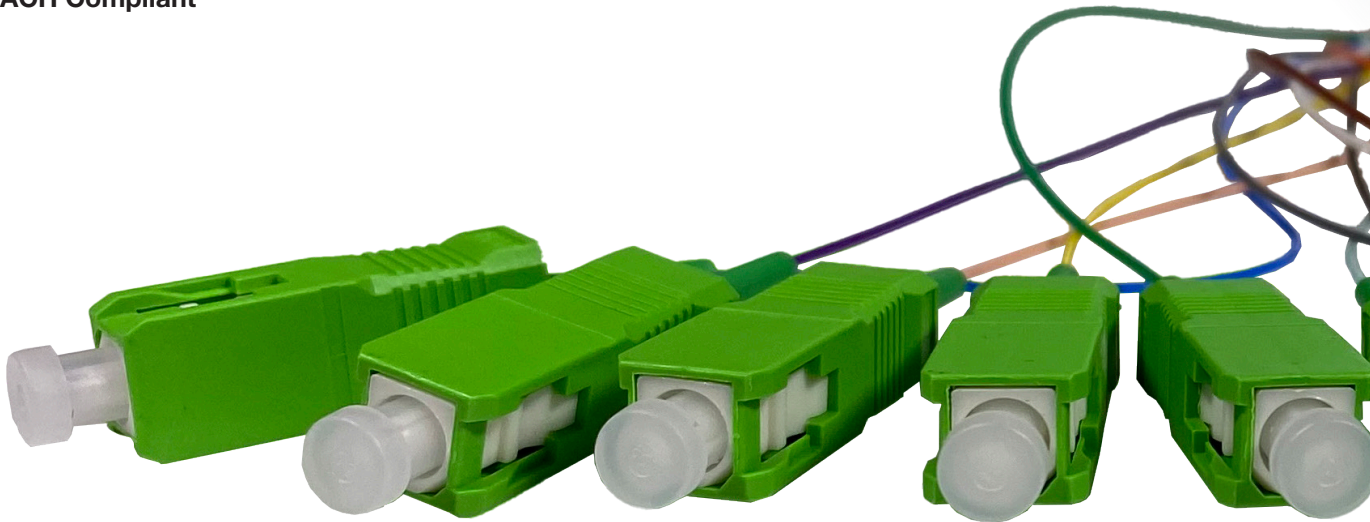


## 12-Fiber Ribbon Pigtail Fan-Out Kits

Sumitomo Electric Lightwave's 12-Fiber Ribbon Pigtail Fan-Out Kits makes it easier to transition ribbon fibers to a connectivity port. Available in most standard connectors, each kit allows for an easy fusion with any type of fiber using an industry fusion splicer. Protected by a 900 micro furcation, will allow for the same secure handling of cabled fibers, and be able to reduce time from slicing.

### FEATURES & BENEFITS

- Easy to use.
- Reduces time to splice.
- Available in Multimode & Single Mode; OM1, OM3, OM4, OM5, OS2
- Available connect and polish types; LC, SC, ST, LC-APC, SC-APC
- RoHS & REACH Compliant



## CONNECTOR TYPES

ITEM NAME	
<b>Subscriber Connector (SC)</b>	
<b>Straight Tip Connector (ST)</b>	
<b>Lucent Connector (LC)</b>	

## POLISH TYPES

ITEM NAME	
<b>Ultra Physical Contact (UPC)</b>	
<b>Angled Physical Contact (APC)</b>	

## FIBER TYPES

FIBER TYPE	SIZE	
<b>OM1</b>	62.5 μm/125 μm	
<b>OM3</b>	50 μm/125 μm	
<b>OM4</b>		
<b>OM5</b>		
<b>Single Mode (SM)</b>	9 μm/125 μm	
<b>Single Mode APC (SM APC)</b>		

## INSERTION LOSS (PER CONNECTOR)

CONNECTOR TYPE	FIBER TYPE	POLISH STYLE	LOSS	WAVELENGTH
<b>SC/ST</b>	SM	UPC	0.30 dB	1310 & 1550 nm
	SM	APC	0.50 dB	1310 & 1550 nm
	OM	UPC	0.50 dB	850 & 1300 nm
<b>LC</b>	SM	UPC	0.25 dB	1310 & 1550 nm
	SM	APC	0.30 dB	1310 & 1550 nm
	OM	UPC	0.30 dB	850 & 1300 nm

## RETURN LOSS (PER CONNECTOR)

CONNECTOR TYPE	FIBER TYPE	POLISH STYLE	LOSS	WAVELENGTH
<b>SC/ST</b>	SM	UPC	-50 dB	1310 & 1550 nm
	SM	APC	-60 dB	1310 & 1550 nm
	OM	UPC	-25 dB	850 & 1300 nm

# ORDERING INFORMATION

## 12-FIBER RIBBON PIGTAIL FAN-OUT KITS

LENGTH SPECIFICATIONS		
Total Length	900 $\mu$ to Connector Length	Ribbon Fiber Length
3 m	0.7 m	2.3 m

## STANDARD, MANUFACTURING LOCATION VARIES

**QUANTITY**  **BOR - BR012**    **3**  **- V**

<b>1 – Connector Type</b> <b>LC</b> – Lucent Connector <b>SC</b> – Subscriber Connector	<b>2 – Polish Type</b> <b>Blank</b> – UPC (Ultra-Physical Connector) <b>A</b> – APC (Angle Polished Connector)	<b>3 – Fiber Type</b> <b>6</b> – OM1 Fiber Type <b>7</b> – OM3 Fiber Type <b>8</b> – OM4 Fiber Type <b>D</b> – OS2 Fiber Type
---	--	---

## STANDARD, MANUFACTURING LOCATION USA

**QUANTITY**  **BOR - BR012**    **3**

<b>1 – Connector Type</b> <b>LC</b> – Lucent Connector <b>SC</b> – Subscriber Connector	<b>2 – Polish Type</b> <b>Blank</b> – UPC (Ultra-Physical Connector) <b>A</b> – APC (Angle Polished Connector)	<b>3 – Fiber Type</b> <b>6</b> – OM1 Fiber Type <b>7</b> – OM3 Fiber Type <b>8</b> – OM4 Fiber Type <b>D</b> – OS2 Fiber Type
---	--	---

## ADDITIONAL OPTIONS

QUANTITY	ITEM NUMBER	CONNECTOR TYPE	FIBER TYPE	POLISH STYLE	TOTAL LENGTH	900 $\mu$ TO CONNECTOR LENGTH	RIBBON FIBER LENGTH	COUNTRY OF ORIGIN	SPECIAL
	<b>BOR-BR012LC2D-R</b>	LC	OS2	UPC	2 m	0.6 m	1.4 m	USA	Plenum Jacket
	<b>BOR-BR012SCU10-D-R</b>	SC	OS2	UPC	3 m	0.7 m	2.3 m	USA	Plenum Jacket
	<b>BOR-BR012SCA3D-R</b>	SC	OS2	APC	3 m	0.7 m	2.3 m	USA	Plenum Jacket
	<b>BOR-BR012LC2DL</b>	LC	OS2	UPC	2.3 m	0.3 m	2 m	USA	N/A
	<b>BOR-BR012LC19-V</b>	LC	OM5	UPC	1 m	0.3 m	0.7 m	Varies	N/A
	<b>BOR-BR012ST3D-V</b>	ST	OS2	UPC	3 m	0.7 m	2.3 m	Varies	N/A

For further ordering assistance, please contact Inside Sales at **800-358-7378** or visit our website at: **SumitomoElectricLightwave.com**